

WAAS CH <b>50515</b> <b>W32A</b>	APP CRS <b>313°</b>	Rwy ldg TDZE Apt Elev	<b>3600</b> <b>1608</b> <b>1608</b>
--	------------------------	-----------------------------	---

# RNAV (GPS) RWY 32

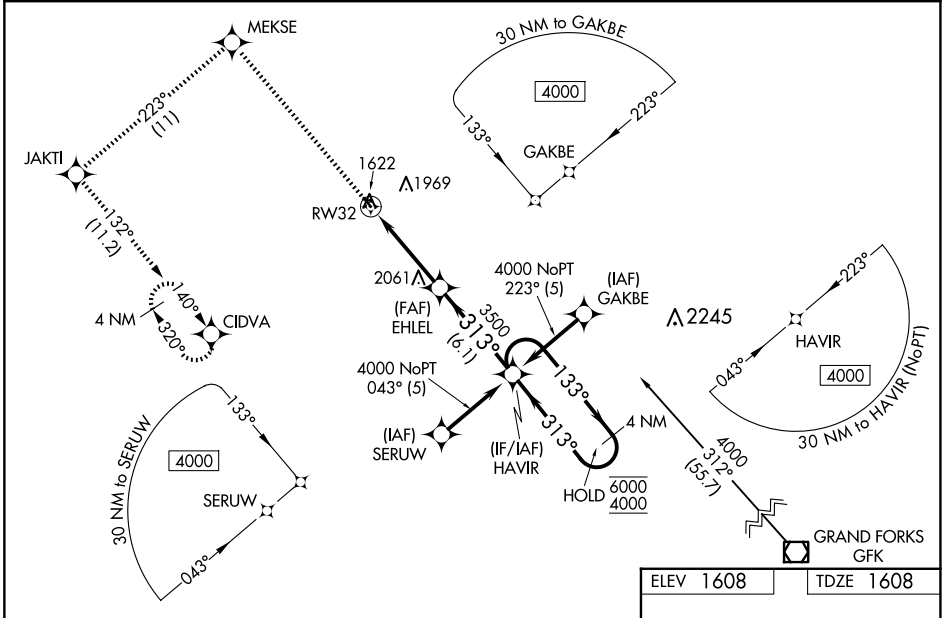
ROBERTSON FLD (D55)

RNP APCH - GPS.

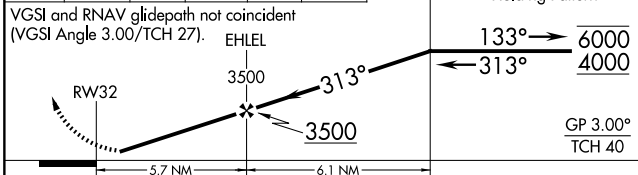
⚠ Circling NA to Rws 8 and 26. Rwy 32 helicopter visibility reduction below 3/4 SM NA. Baro-VNAV NA when using Devils Lake altimeter setting. For uncompensated Baro-VNAV systems, LNAV/VNAV NA below -18°C or above 54°C. When local altimeter setting not received, use Devils Lake altimeter setting and increase LPV DA to 1983 feet; increase LNAV/VNAV DA to 2284 feet and all visibilities 3/4 SM. Increase all MDAs 140 feet and LNAV visibility Cat A/C 1/2 SM, and Circling visibility Cat A/C 1/2 SM.

MISSED APPROACH: Climb to 4000 direct MEKSE and on 223° track to JAKTI and on 132° track to CIDVA and hold.

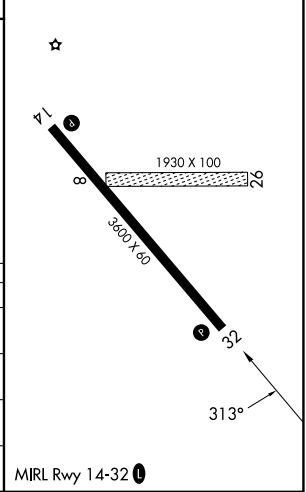
AWOS-3 <b>118.225</b>	MINNEAPOLIS CENTER <b>132.15 269.6</b>	UNICOM <b>122.8 (CTAF) 0</b>
--------------------------	---	---------------------------------



4000	MEKSE	tr 223°	JAKTI	tr 132°	CIDVA	HAVIR	4 NM Holding Pattern
------	-------	---------	-------	---------	-------	-------	----------------------



ELEV 1608	TDZE 1608
-----------	-----------



CATEGORY	A	B	C	D
LPV DA	1858-1 250 (300-1)			NA
LNAV/VNAV DA	2159-1 5/8 551 (600-1 5/8)			NA
LNAV MDA	2360-1 752 (800-1)	2360-1 1/4 752 (800-1 1/4)	2360-2 752 (800-2)	NA
CIRCLING	2360-1 752 (800-1)	2360-1 1/4 752 (800-1 1/4)	2360-2 1/4 752 (800-2 1/4)	NA

NC-1, 11 JUN 2026 to 09 JUL 2026

NC-1, 11 JUN 2026 to 09 JUL 2026