

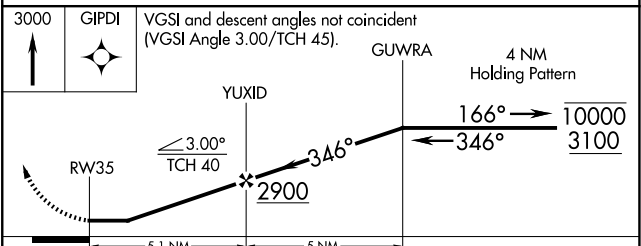
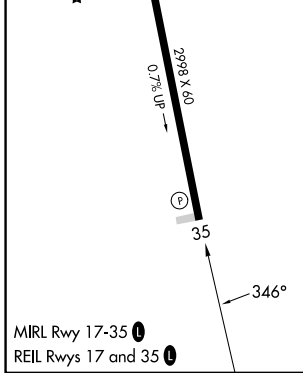
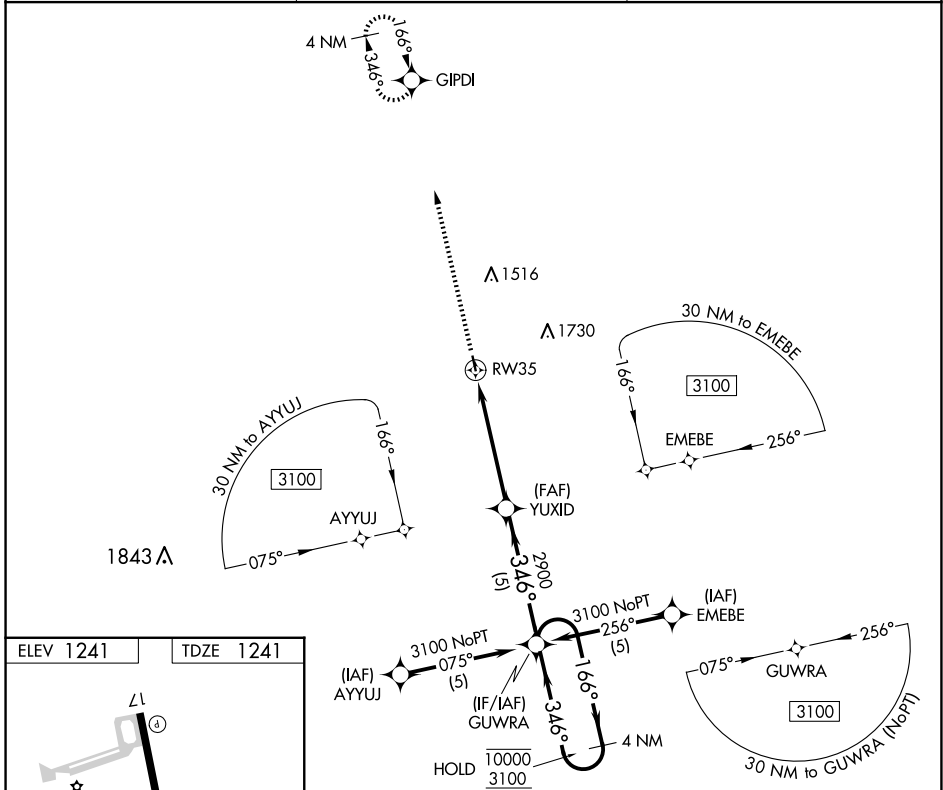
APP CRS 346°	Rwy Idg 2998
	TDZE 1241
	Apt Elev 1241

RNAV (GPS) RWY 35

SALEM MEML (K33)

RNP APCH - GPS.	MISSED APPROACH: Climb to 3000 direct GIPDI and hold.
<p>▼ Rwy 35 helicopter visibility reduction below 3/4 SM NA. When VIH altimeter setting not received, procedure NA. Use VIH altimeter setting.</p> <p>▲ NA</p>	

VIH ASOS 119.025	KANSAS CITY CENTER 128.35 284.675	CTAF 122.9
----------------------------	---	----------------------



CATEGORY	A	B	C	D
LNNAV MDA	1960-1	719 (800-1)	NA	
CIRCLING	1960-1	719 (800-1)	NA	

NC-3, 11 JUN 2026 to 09 JUL 2026

NC-3, 11 JUN 2026 to 09 JUL 2026