

LOC/DME I-PBX <b>109.7</b> Chan <b>34</b>	APP CRS <b>274°</b>	Rwy Ldg TDZE <b>1463</b> Apt Elev <b>1465</b>
---	------------------------	---

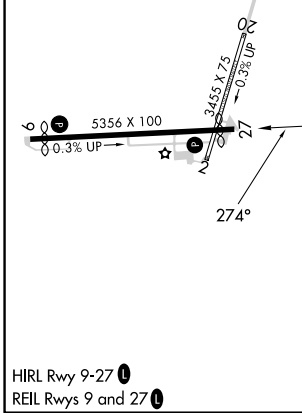
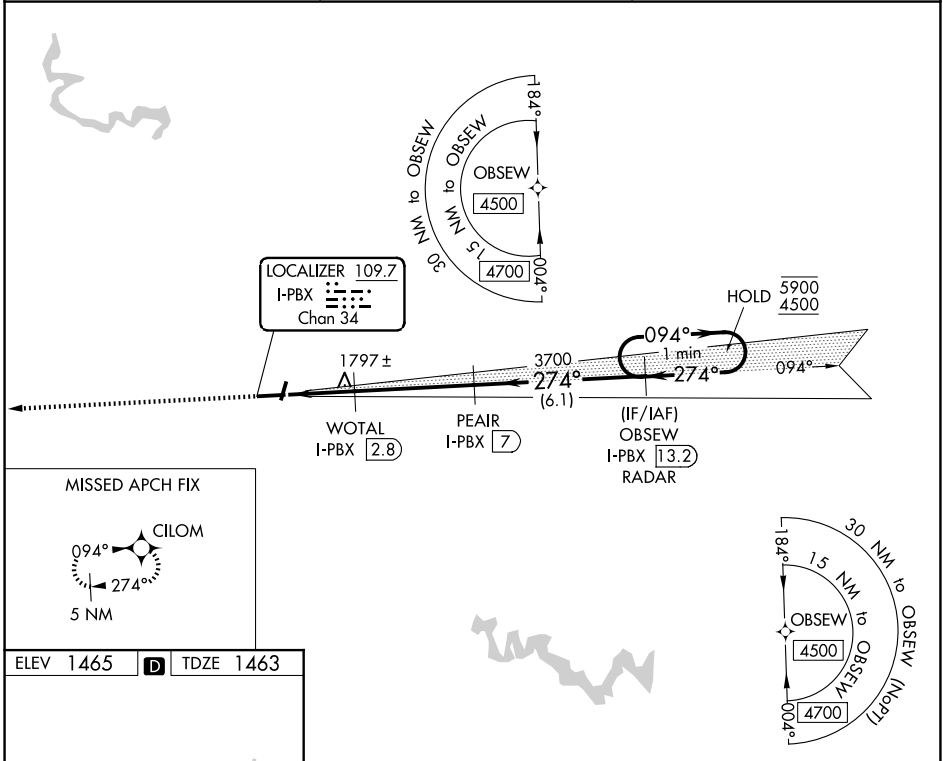
**ILS or LOC RWY 27**  
PIKE COUNTY/HATCHER FLD (P.B.X)

RNP APCH - GPS.  
 ▼ Circling NA to Rws 2 and 20.  
 ▲ Rwy 27 helicopter visibility reduction below 3/4 SM NA.  
 MISSED APPROACH: Climb to 4500 direct CILOM and hold, continue climb-in-hold to 4500.

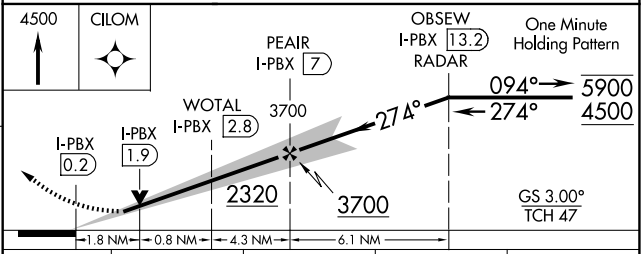
AWOS-3PT  
**121.225**

INDIANAPOLIS CENTER  
**126.575 257.85**

UNICOM  
**122.8 (CTAF) 0**



ELEV <b>1465</b>	<b>D</b>	TDZE <b>1463</b>
------------------	----------	------------------



CATEGORY	A	B	C	D
S-ILS 27	1722-1		259 (300-1)	
S-LOC 27	2080-1	617 (700-1)	2080-1 3/4	617 (700-1 3/4)
CIRCLING	2120-1 655 (700-1)	2180-1 715 (800-1)	2180-2 715 (800-2)	2460-3 995 (1000-3)

SE-1, 11 JUN 2026 to 09 JUL 2026

SE-1, 11 JUN 2026 to 09 JUL 2026