

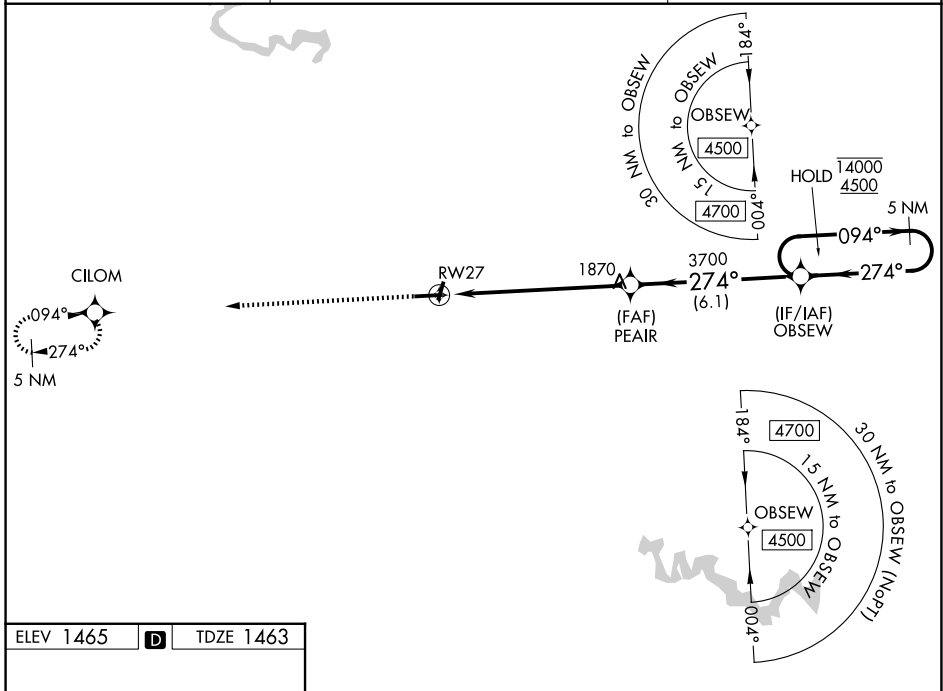
WAAS CH <b>86540</b> <b>W27A</b>	APP CRS <b>274°</b>	Rwy Ldg <b>4650</b> TDZE <b>1463</b> Apt Elev <b>1465</b>
--	------------------------	---

# RNAV (GPS) RWY 27

PIKE COUNTY/HATCHER FLD (P.B.X)

RNP APCH - GPS.	<p><b>▼</b> For uncompensated Baro-VNAV systems, LNAV/VNAV NA below -17°C or above 54°C. Rwy 27 helicopter visibility reduction below 3/4 SM NA. Circling NA to Rws 2 and 20.</p> <p><b>▲</b></p>	MISSED APPROACH: Climb to 4500 direct CILOM and hold, continue climb-in-hold to 4500.
-----------------	---	---

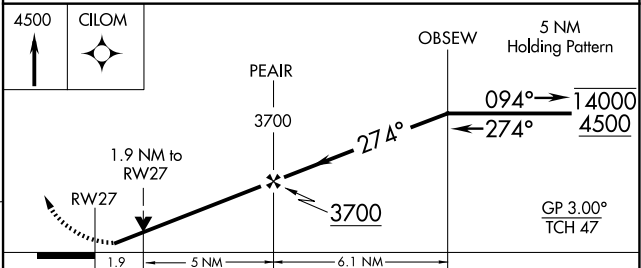
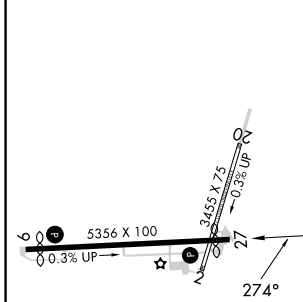
AWOS-3PT <b>121.225</b>	INDIANAPOLIS CENTER <b>126.575 257.85</b>	UNICOM <b>122.8 (CTAF) 0</b>
----------------------------	--	---------------------------------



SE-1, 11 JUN 2026 to 09 JUL 2026

SE-1, 11 JUN 2026 to 09 JUL 2026

ELEV 1465	<b>D</b>	TDZE 1463
-----------	----------	-----------



CATEGORY	A	B	C	D
LPV DA		1722-1	259 (300-1)	
LNAV/VNAV DA		2120-1 7/8	657 (700-1 7/8)	
LNAV MDA	2120-1	657 (700-1)	2120-1 7/8	657 (700-1 7/8)
CIRCLING	2120-1 655 (700-1)	2180-1 715 (800-1)	2180-2 715 (800-2)	2460-3 995 (1000-3)