

WAAS CH 61240 W09A	APP CRS 094°	Rwy Ldg TDZE Apt Elev	4650 1459 1465
--	------------------------	-----------------------------	---

RNAV (GPS) RWY 9

PIKE COUNTY/HATCHER FLD (P.B.X)

RNP APCH - GPS.

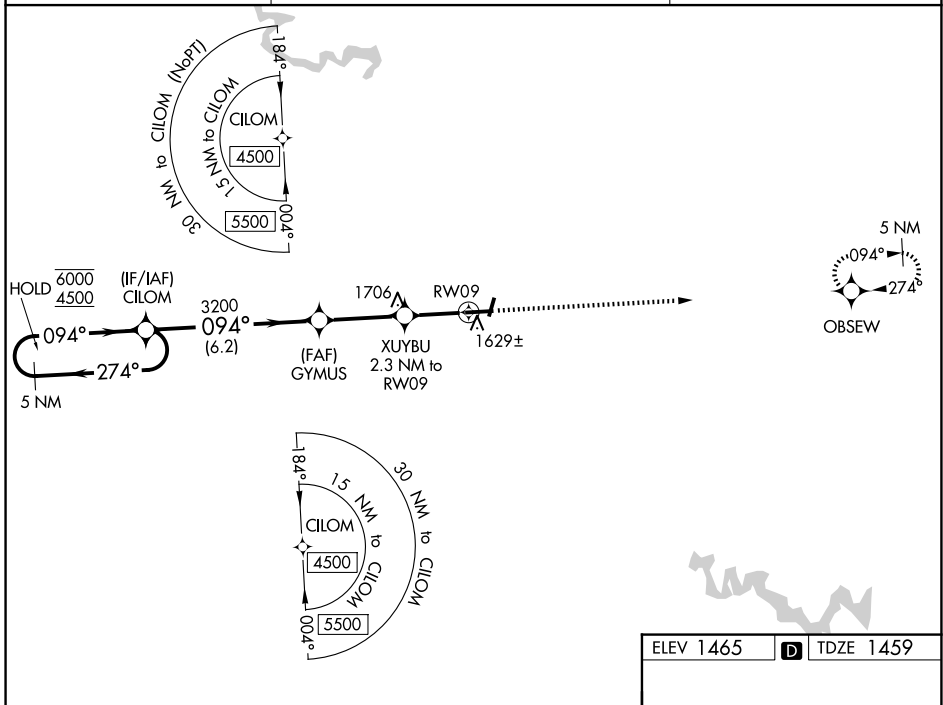
⚠ For uncompensated Baro-VNAV systems, LNAV/VNAV NA below -17°C or above 54°C. Circling NA to Rwy's 2 and 20. Helicopter visibility reduction below ¼ SM NA.

MISSED APPROACH: Climb to 4500 direct OBSEW and hold. Continue climb in hold to 4500.

AWOS-3PT
121.225

INDIANAPOLIS CENTER
126.575 257.85

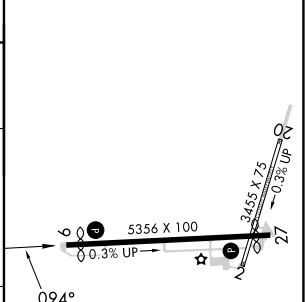
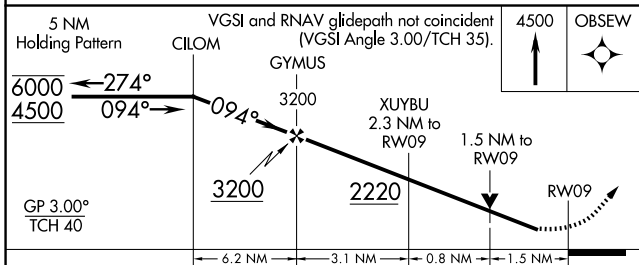
UNICOM
122.8 (CTAF) 0



SE-1, 11 JUN 2026 to 09 JUL 2026

SE-1, 11 JUN 2026 to 09 JUL 2026

ELEV 1465	D TDZE 1459
-----------	--------------------



CATEGORY	A	B	C	D
LPV DA		1709-1	250 (300-1)	
LNAV/VNAV DA		1891-1½	432 (500-1½)	
LNAV MDA	1960-1	501 (500-1)	1960-1⅓	501 (500-1⅓)
CIRCLING	2120-1 655 (700-1)	2180-1 715 (800-1)	2180-2 715 (800-2)	2460-3 995 (1000-3)

