

WAAS CH <b>82522</b> <b>W35A</b>	APP CRS <b>357°</b>	Rwy Ldg TDZE Apt Elev	<b>4296</b> <b>600</b> <b>600</b>
--	------------------------	-----------------------------	---

# RNAV (GPS) RWY 35

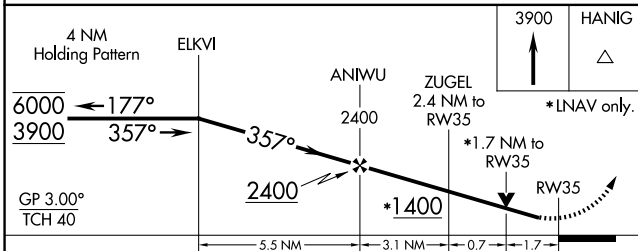
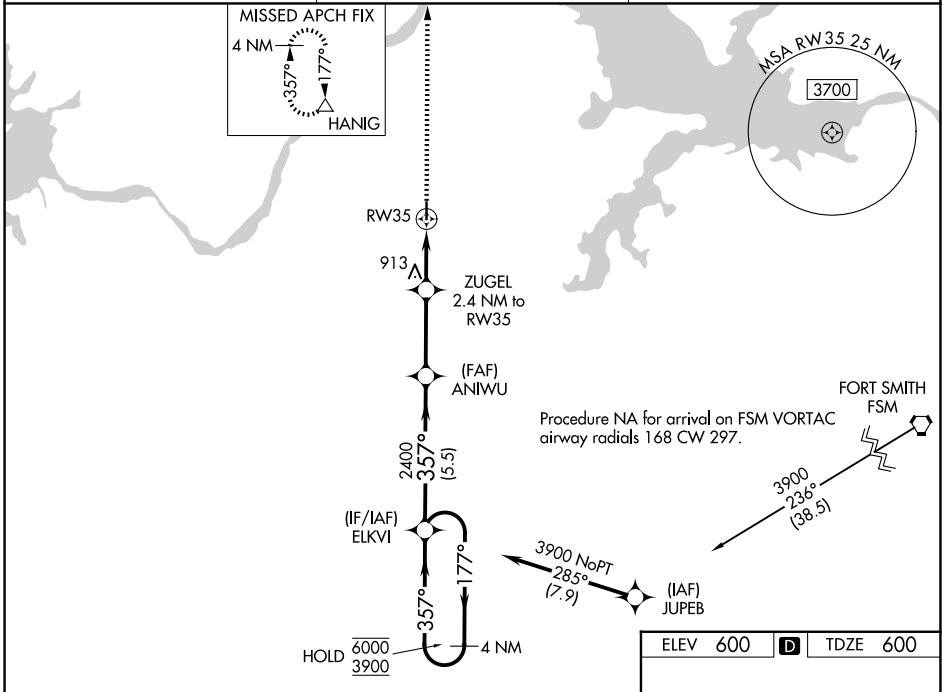
STIGLER RGNL (GZL)

RNP APCH.

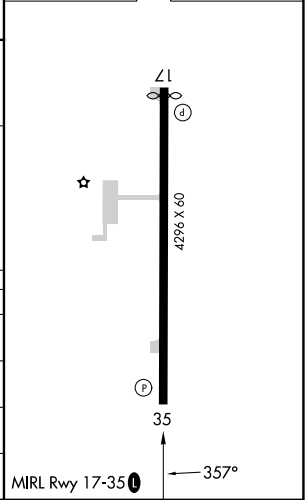
**⚠** Circling Rwy 17 NA at night. Rwy 35 helicopter visibility reduction below  $\frac{3}{4}$  SM NA. For uncompensated Baro-VNAV systems, LNAV/VNAV NA below -16°C or above 54°C.

MISSED APPROACH: Climb to 3900 direct HANIG and hold.

AWOS-3PT <b>118.575</b>	FORT WORTH CENTER <b>132.2 338.35</b>	CTAF <b>122.9</b>
----------------------------	--	----------------------



ELEV 600	<b>D</b>	TDZE 600
----------	----------	----------



CATEGORY	A	B	C	D
LPV DA	850-1	250 (300-1)		NA
LNAV/VNAV DA	867-1	267 (300-1)		NA
LNAV MDA	1180-1	580 (600-1)		NA
CIRCLING	1180-1	580 (600-1)		NA

SC-1, 11 JUN 2026 to 09 JUL 2026

SC-1, 11 JUN 2026 to 09 JUL 2026