

LOC/DME I-TTA 110.75 Chan 44 (Y)	APP CRS 029°	Rwy Ldg TDZE Apt Elev	6501 246 246
---	------------------------	-----------------------------	---

ILS Z or LOC Z RWY 3

RALEIGH EXEC JETPORT AT SANFORD-LEE COUNTY (TTA)

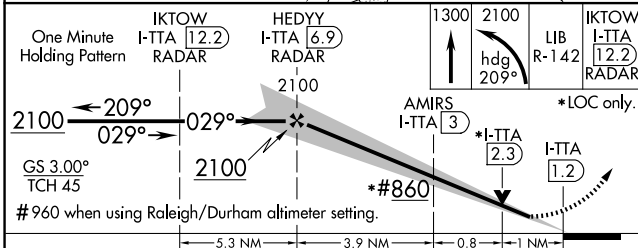
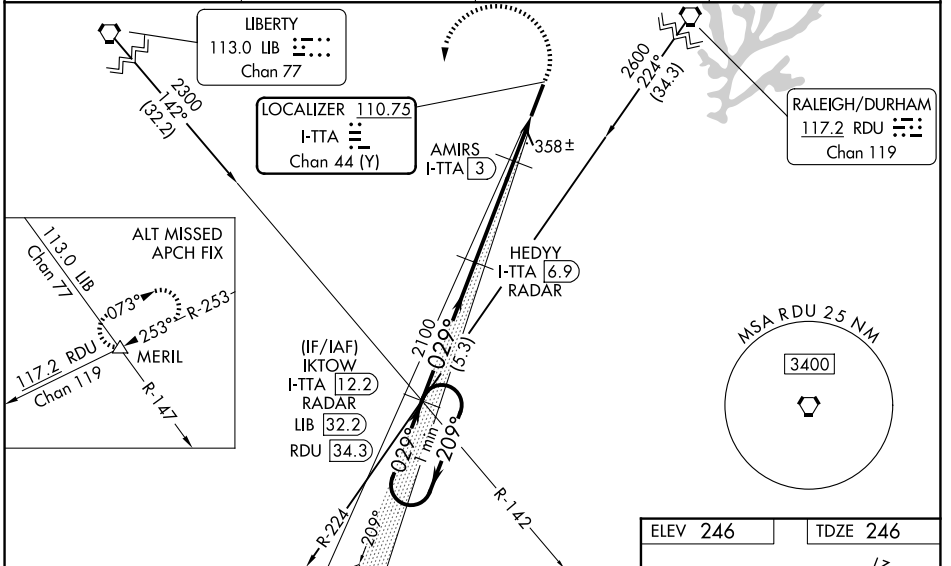
DME required for LOC only.

NA When local altimeter setting not received, use Raleigh/Durham altimeter setting: increase DA to 527 feet; increase all MDAs 100 feet and S-LOC 3 Cats C and D visibility to 1½ SM, increase Circling Cat C visibility to 2 SM and Cat D to 2¾ SM; AMIRS FIX MINIMUMS: increase S-LOC 3 Cats C and D visibility to 1 SM, and Circling Cat C visibility to 2 SM and Cat D visibility to 2¾ SM. For inop ALS, increase S-LOC 3 Cats C and D visibility to 1¾ SM. AMIRS FIX MINIMUMS: increase S-LOC 3 Cats C and D visibility to 1 SM. For inop ALS when using Raleigh/Durham altimeter setting, increase S-ILS 3 all Cats visibility to ¾ SM and S-LOC 3 Cats C and D visibility to 2 SM. AMIRS FIX MINIMUMS: increase S-LOC 3 Cats C and D visibility to 1¾ SM. VDP NA when using Raleigh/Durham altimeter setting.

MALSRL
A5

MISSED APPROACH:
Climb to 1300 then climbing left turn to 2100 on heading 209° and LIB VORTAC R-142 to IKTOW INT/I-TTA 12.2 DME/RADAR and hold.

AWOS-3 120.625	RALEIGH APP CON 125.3 353.675	UNICOM 123.075 (CTAF) 0	GCO 135.075
--------------------------	---	-----------------------------------	-----------------------



ELEV 246	TDZE 246
----------	----------

	60	90	120	150	180
Knots	5:42	3:48	2:51	2:17	1:54
Min:Sec					

CATEGORY	A	B	C	D
S-ILS 3		446-½	200 (200-½)	
S-LOC 3	860-½	614 (700-½)	860-1¾	614 (700-1¾)
CIRCLING	860-1	614 (700-1)	860-1¾	960-2¼
			614 (700-1¾)	714 (800-2¼)
AMIRS FIX MINIMUMS				
S-LOC 3	620-½	374 (400-½)	620-5⁄8	374 (400-5⁄8)
CIRCLING	760-1	820-1	840-1½	960-2¼
	514 (600-1)	574 (600-1)	594 (600-1½)	714 (800-2¼)

SE-2, 11 JUN 2026 to 09 JUL 2026

SE-2, 11 JUN 2026 to 09 JUL 2026