

WAAS CH 72822 W03A	APP CRS 029°	Rwy Ldg TDZE Apt Elev	6501 246 246
--	------------------------	-----------------------------	---

RNAV (GPS) RWY 3

RALEIGH EXEC JETPORT AT SANFORD-LEE COUNTY (TTA)

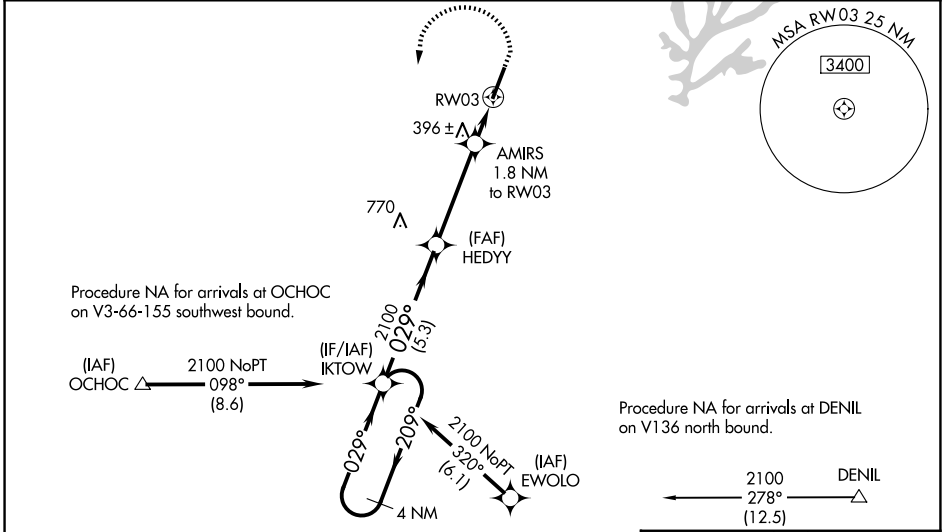
▼ Baro-VNAV NA when using Raleigh/Durham altimeter setting. For uncompensated Baro-VNAV systems, LNAV/VNAV NA below -15°C (5°F) or above 54°C (130°F). DME/DME RNP-0.3 NA.

▲ When local altimeter setting not received, use Raleigh/Durham altimeter setting and increase all DA 81 feet and all MDA 100 feet. Increase LNAV/VNAV all Cats visibility to 1½ mile, LNAV Cats C and D visibility to 1 mile, and Circling Cat C visibility to 2 mile and Cat D visibility to 2¾ mile. For inop MALSRL, increase LNAV/VNAV all Cats visibility to 1¼ mile and LNAV Cats C and D visibility to 1½ mile. For inop MALSRL when using Raleigh/Durham altimeter setting, increase LPV all Cats visibility to 7⁄8 mile and LNAV Cats C and D visibility to 1½ mile. VDP NA when using Raleigh/Durham altimeter setting.



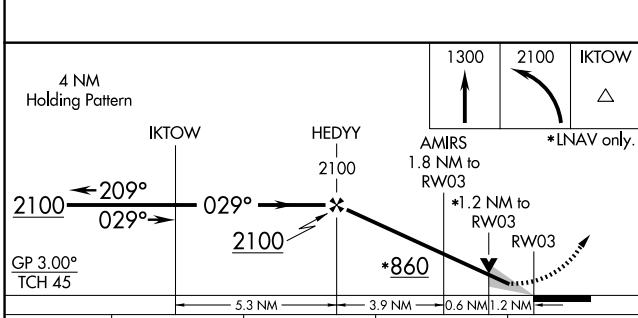
MISSED APPROACH:
Climb to 1300 then climbing left turn to 2100 direct IKTOW and hold.

AWOS-3 120.625	RALEIGH APP CON 125.3 353.675	UNICOM 123.075 (CTAF) 0	GCO 135.075
--------------------------	---	-----------------------------------	-----------------------

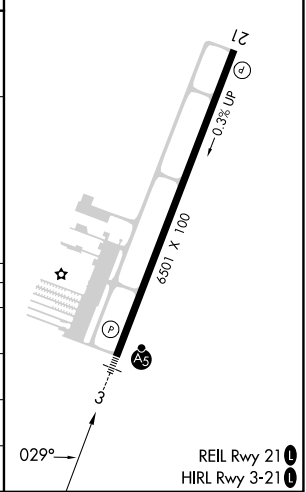


SE-2, 11 JUN 2026 to 09 JUL 2026

SE-2, 11 JUN 2026 to 09 JUL 2026



ELEV	246	TDZE	246
------	-----	------	-----



CATEGORY	A	B	C	D
LPV DA		446-½	200 (200-½)	
LNAV/VNAV DA		634-7⁄8	388 (400-7⁄8)	
LNAV MDA	660-½	414 (500-½)	660-¾	414 (500-¾)
CIRCLING	760-1 514 (600-1)	820-1 574 (600-1)	840-1½ 594 (600-1½)	960-2¼ 714 (800-2¼)

RNAV (GPS) RWY 3