

| | | | |
|--|------------------------|-----------------------------|---|
| WAAS CH 58221 W35A | APP CRS 348° | Rwy Ldg TDZE Apt Elev | 6300 5022 5022 |
|--|------------------------|-----------------------------|---|

RNAV (GPS) RWY 35

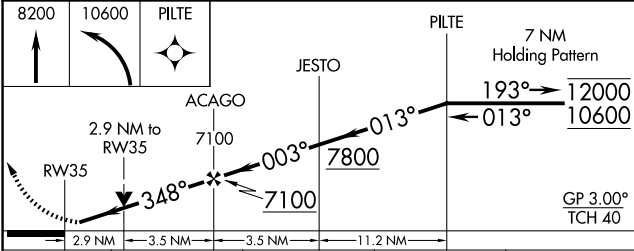
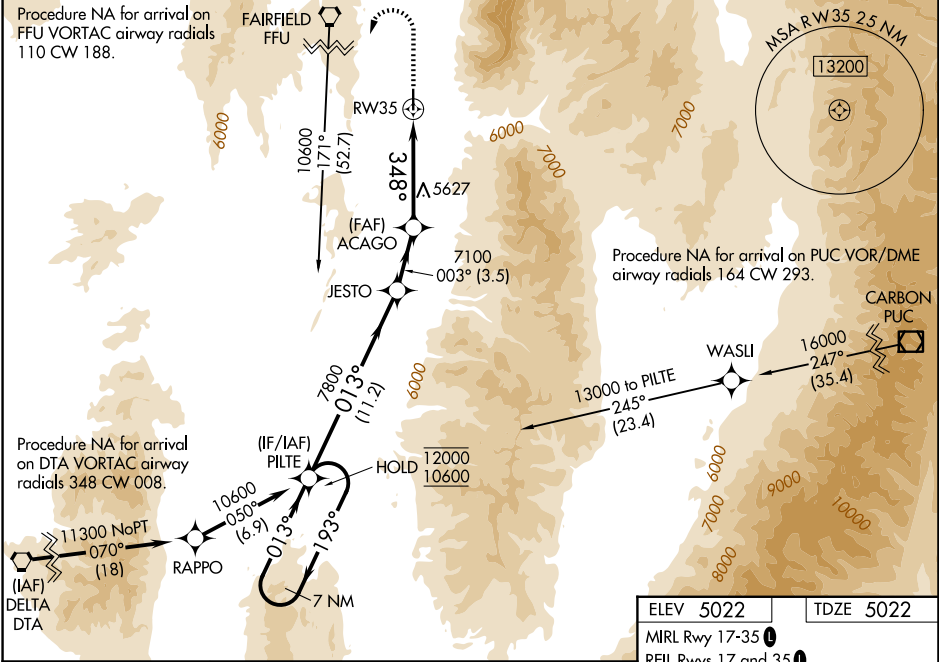
NEPHI MUNI (U14)

RNP APCH - GPS.

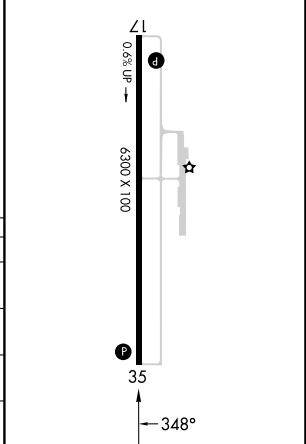
⚠ Rwy 35 helicopter visibility reduction below 3/4 SM NA. Baro-VNAV NA. VDP NA when using PVU altimeter setting. When local altimeter setting not received, use PVU altimeter setting; increase LPV DA to 5416 feet and all visibilities 3/8 SM, increase LNAV/VNAV DA to 5756 feet and all visibilities 1/4 SM; increase all MDAs 160 feet.

MISSED APPROACH: (Do not exceed 195K until PILTE) Climb to 8200 then climbing left turn to 10600 direct PILTE and hold.

| | | |
|----------------------------|--|-----------------------------------|
| AWOS-3PT 118.275 | SALT LAKE CENTER 127.825 239.025 | UNICOM 123.075 (CTAF) ① |
|----------------------------|--|-----------------------------------|



| | |
|----------------------|-----------|
| ELEV 5022 | TDZE 5022 |
| MIRL Rwy 17-35 ① | |
| REIL Rws 17 and 35 ① | |



| CATEGORY | A | B | C | D |
|--------------|--------------------------------|--------------------------------|---------------------|---|
| LPV DA | 5272-3/4 | | 250 (300-3/4) | |
| LNAV/VNAV DA | 5612-13/4 | | 590 (600-13/4) | |
| LNAV MDA | 5980-1 1/4 958 (1000-1 1/4) | 5980-1 1/2 958 (1000-1 1/2) | 5980-3 958 (1000-3) | |
| CIRCLING | 5980-1 1/4 958 (1000-1 1/4) | 5980-1 1/2 958 (1000-1 1/2) | NA | |

SW-4, 11 JUN 2026 to 09 JUL 2026

SW-4, 11 JUN 2026 to 09 JUL 2026