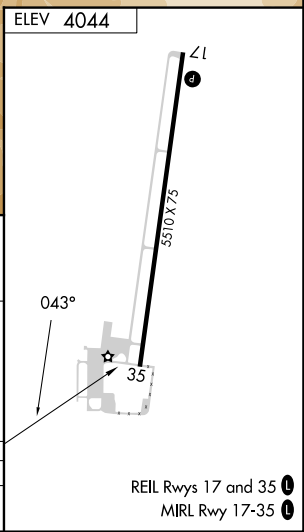
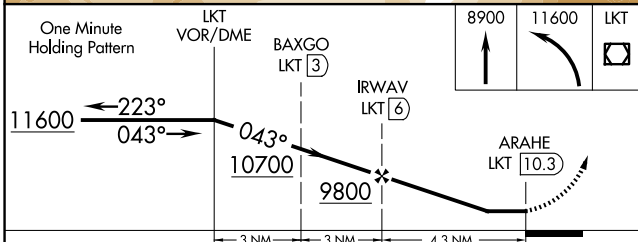
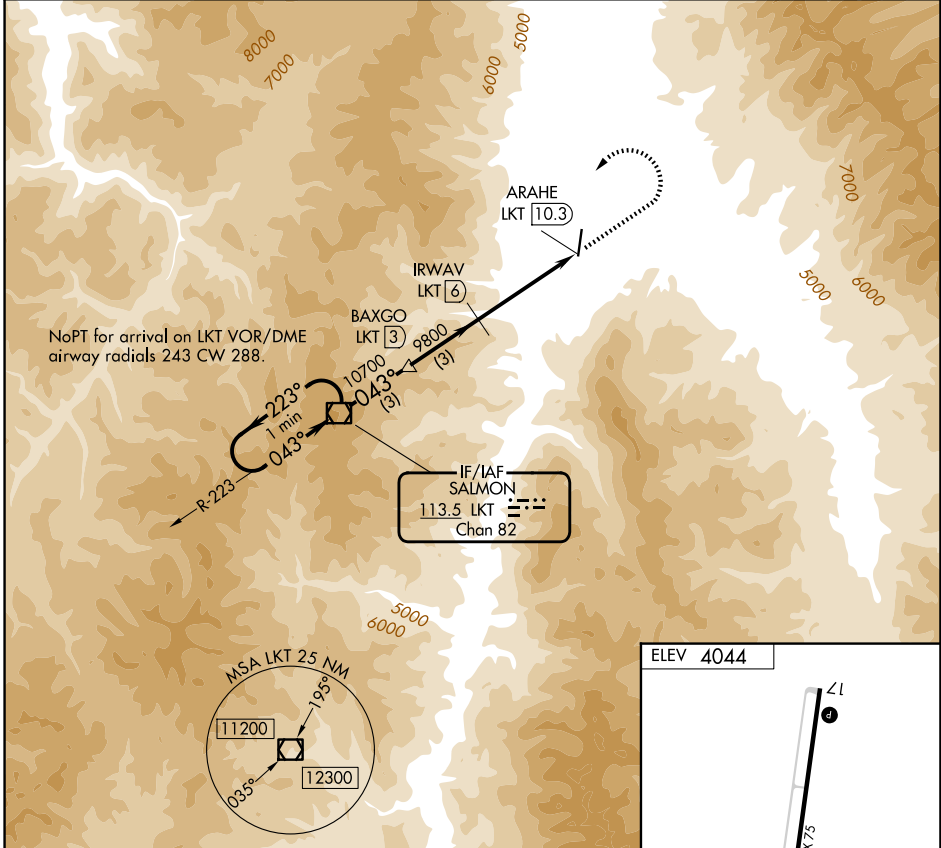


VOR/DME LKT 113.5 Chan 82	APP CRS 043°	Rwy Ldg TDZE Apt Elev 4044	N/A N/A
---	------------------------	--------------------------------------	--------------------------

VOR/DME-B
LEMHI COUNTY (SMN)

NA -12°C	Circling NA for Cat C east of Rwy 17-35. Night Landing: Rwy 35 NA.	MISSED APPROACH: Climb to 8900 then climbing left turn to 11600 direct LKT VOR/DME and hold, continue climb-in-hold to 11600.
-------------	---	---

AWOS-3PT 135.075	SALT LAKE CENTER 132.4 338.3	UNICOM 122.8 (CTAF)
----------------------------	--	-------------------------------



CATEGORY	A	B	C	D
CIRCLING	8100-1¼ 4056 (4100-1¼)	8100-1½ 4056 (4100-1½)	8100-3 4056 (4100-3)	NA

NW-1, 11 JUN 2026 to 09 JUL 2026

NW-1, 11 JUN 2026 to 09 JUL 2026

REIL Rwy 17 and 35
MIRL Rwy 17-35