

WAAS CH 82206 W15A	APP CRS 147°	Rwy Ldg 11820 TDZE 504 Apt Elev 504
--	------------------------	--

RNAV (GPS) RWY 15

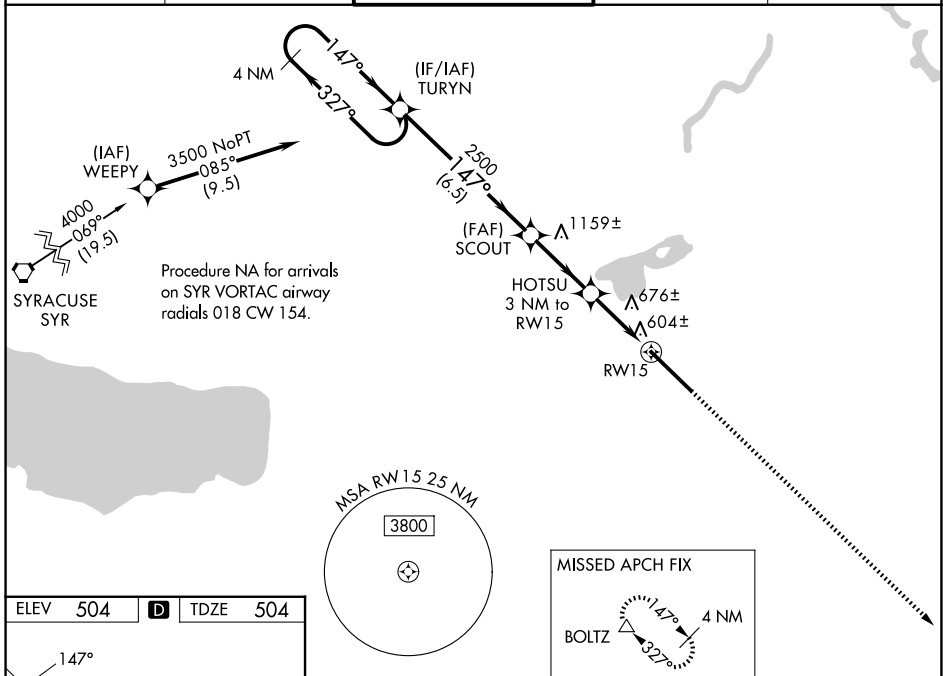
GRIFFISS INTL (RME)

RNP APCH-GPS.

▼ For uncompensated Baro-VNAV systems, LNAV/VNAV NA below -16°C or above 48°C.
 ▲ When local altimeter setting not received, use Syracuse altimeter setting and increase LPV DA to 804 feet, LNAV/VNAV DA to 1152 feet and all MDA 100 feet. Increase LNAV/VNAV all Cats, LNAV Cats C and D and Circling Cats B and C visibility ¼ SM. Baro-VNAV and VDP NA when using Syracuse altimeter setting. Circling NA southwest of Rwy 15-33.

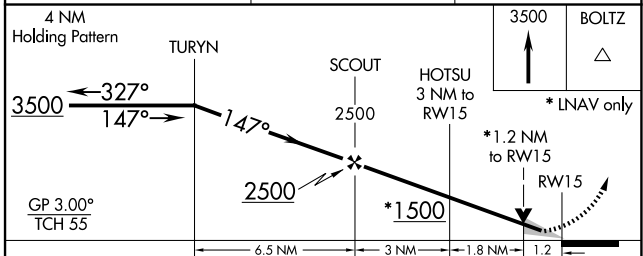
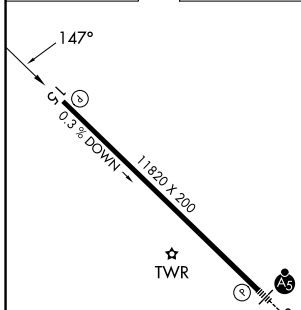
MISSED APPROACH: Climb to 3500 direct BOLTZ and hold.

ATIS 118.7	SYRACUSE APP CON 127.425 290.45	GRIFFISS TOWER * 118.1 (CTAF) 0 291.7	GND CON 121.9	UNICOM 122.95
----------------------	---	---	-------------------------	-------------------------



Procedure NA for arrivals on SYR VORTAC airway radials 018 CW 154.

ELEV 504	D	TDZE 504
-----------------	----------	-----------------



CATEGORY	A	B	C	D
LPV DA		704-1	200 (200-1)	
LNAV/VNAV DA		1052-2		548 (600-2)
LNAV MDA	940-1	436 (500-1)	940-1¼ 436 (500-1¼)	940-1½ 436 (500-1½)
CIRCLING	1140-1 636 (700-1)	1260-1 756 (800-1)	1400-2¾ 896 (900-2¾)	1640-3 1136 (1200-3)

NE-2, 11 JUN 2026 to 09 JUL 2026

NE-2, 11 JUN 2026 to 09 JUL 2026