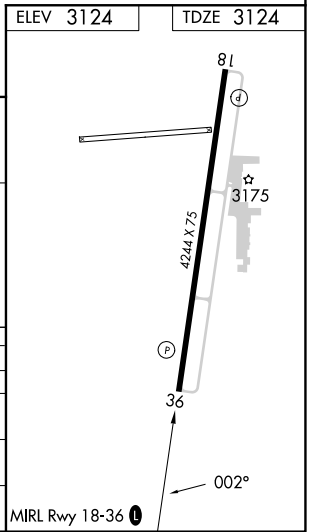
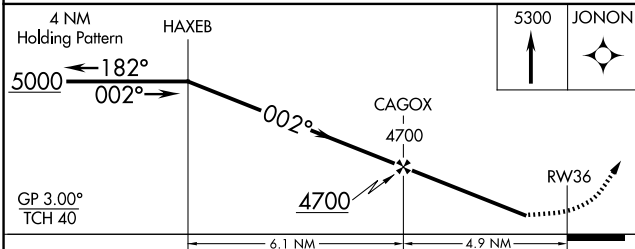
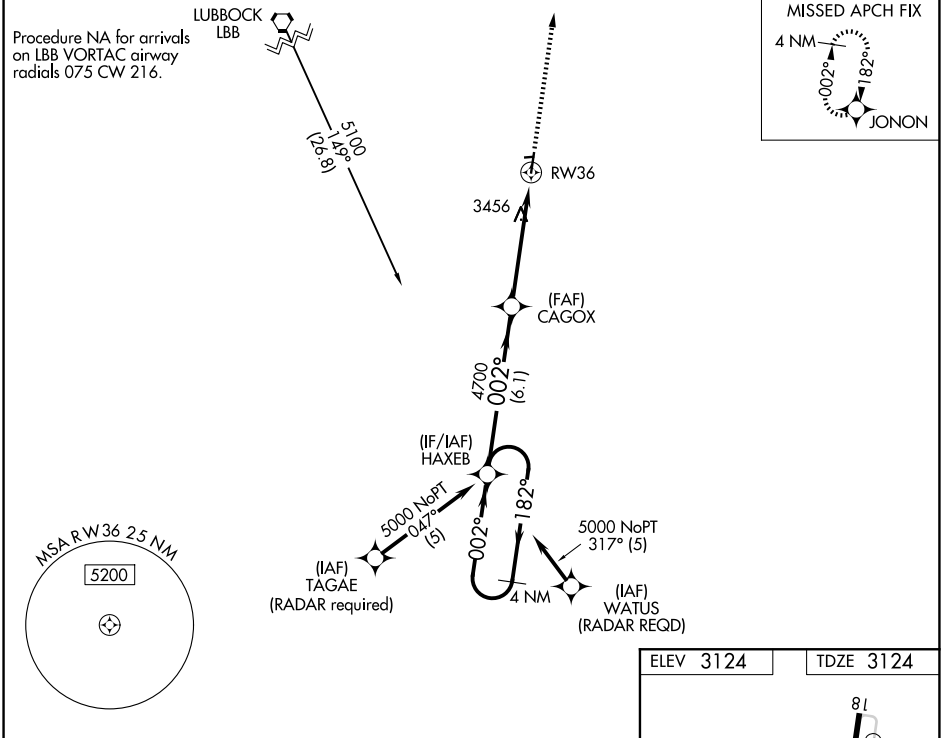


WAAS CH 86939 W36A	APP CRS 002°	Rwy Ldg 4244 TDZE 3124 Apt Elev 3124
---------------------------------	------------------------	---

RNAV (GPS) RWY 36

CITY OF SLATON/LARRY T NEAL MEML (F49)

<p>V Baro-VNAV NA. DME/DME RNP-0.3 NA. Helicopter visibility reduction</p> <p>A NA below 3/4 SM NA.</p>	<p>MISSED APPROACH: Climb to 5300 direct JONON and hold.</p>	
<p>LBB ASOS 125.3 270.275</p>	<p>LUBBOCK APP CON 119.2 351.8</p>	<p>UNICOM 123.0 (CTAF)</p>



CATEGORY	A	B	C	D
LPV DA		3883-3	759 (800-3)	
LNAV/VNAV DA		3849-3	725 (800-3)	
LNAV MDA	3760-1	636 (700-1)	3760-1 3/4	636 (700-1 3/4)
CIRCLING	3760-1 636 (700-1)	3820-1 696 (700-1)	3820-2 696 (700-2)	3820-2 1/4 696 (700-2 1/4)

SC-2, 11 JUN 2026 to 09 JUL 2026

SC-2, 11 JUN 2026 to 09 JUL 2026