

WAAS CH <b>53431</b> <b>W21A</b>	APP CRS <b>210°</b>	Rwy Idg TDZE Apt Elev	<b>4000</b> <b>364</b> <b>364</b>
--	------------------------	-----------------------------	---

**RNAV (GPS) RWY 21**  
WINONA-MONTGOMERY COUNTY (5A6)

RNP APCH - GPS.

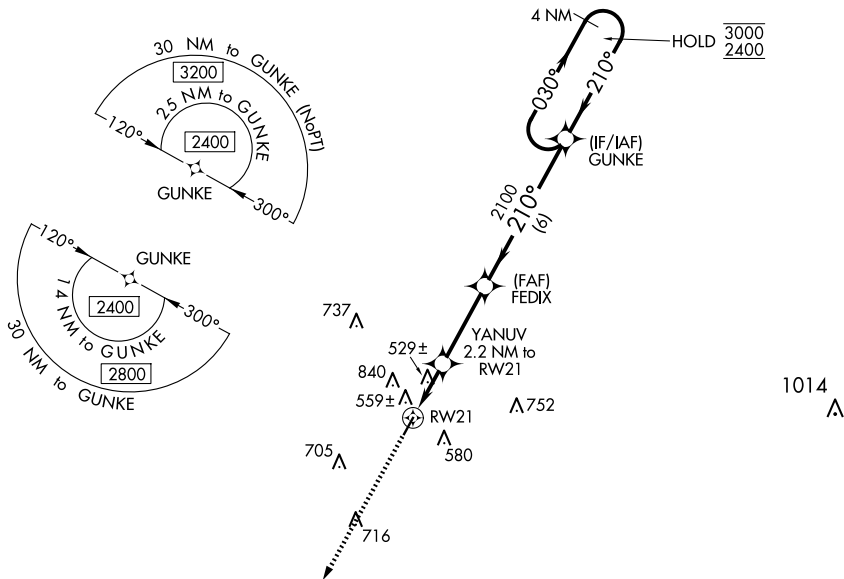
**NA** Rwy 21 helicopter visibility reduction below 1 SM NA.  
Procedure NA at night. Circling NA northwest of Rwy 3-21.  
When local altimeter setting not received, use GNF altimeter setting.

MISSED APPROACH: Climb to 2500 direct GUCEY and hold.

AWOS-3PT  
**120.175**

MEMPHIS CENTER  
**128.5 279.55**

CTAF  
**122.9**



SC-4, 11 JUN 2026 to 09 JUL 2026

SC-4, 11 JUN 2026 to 09 JUL 2026

