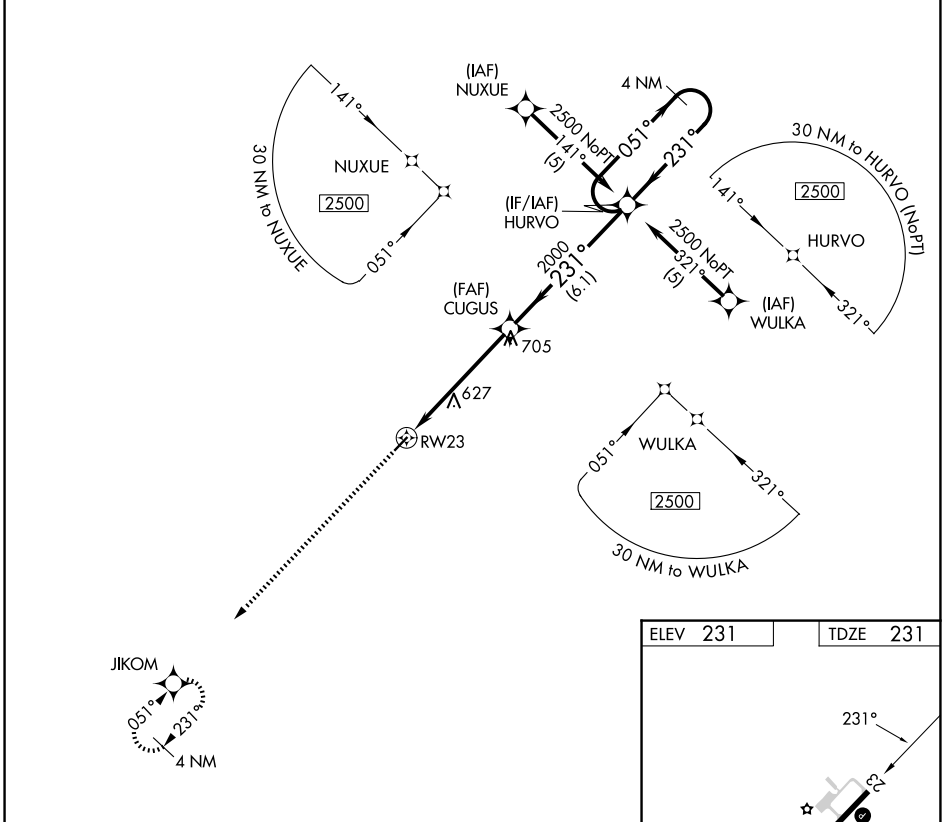


APP CRS	Rwy Ldg	3603
231°	TDZE	231
	Apt Elev	231

RNAV (GPS) RWY 23

BAMBERG COUNTY (99N)

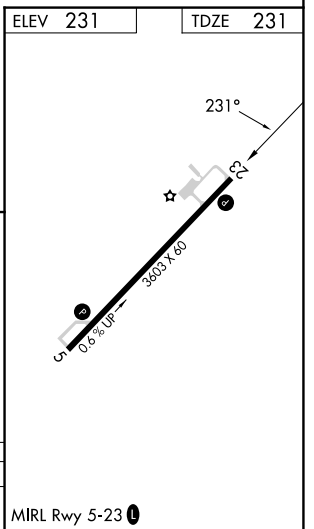
RNP APCH.		MISSED APPROACH: Climb to 2500 direct JIKOM and hold.
Procedure NA at night. Rwy 23 helicopter visibility reduction below 1 SM NA. Use Orangeburg Muni altimeter setting; when not received, procedure NA.		
OGB ASOS 118.525	COLUMBIA APP CON 124.15 338.2	UNICOM 122.8 (CTAF) 0



SE-2, 11 JUN 2026 to 09 JUL 2026

SE-2, 11 JUN 2026 to 09 JUL 2026

2500	JIKOM	4 NM Holding Pattern	
↑		HURVO	2500
RW23	CUGUS	051° →	← 231°
		2000	
		3.05° TCH 40	
	5.4 NM	6.1 NM	
CATEGORY	A	B	C D
LNAV MDA	920-1	689 (700-1)	NA



MIRL Rwy 5-23 0