

MAGEE, MISSISSIPPI

AL-9829 (FAA)

26022

WAAS CH <b>69235</b> <b>W36A</b>	APP CRS <b>360°</b>	Rwy Ldg TDZE <b>555</b> Apt Elev <b>555</b>	<b>3103</b>
--	------------------------	---	-------------

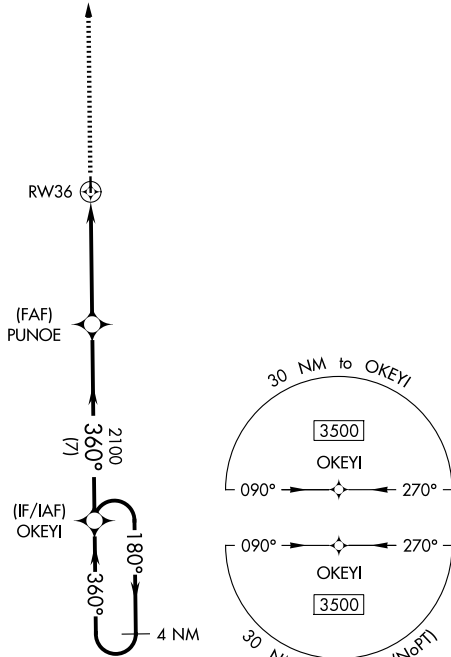
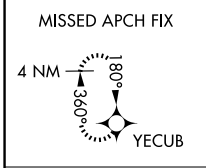
# RNAV (GPS) RWY 36

MAGEE MUNI (17M)

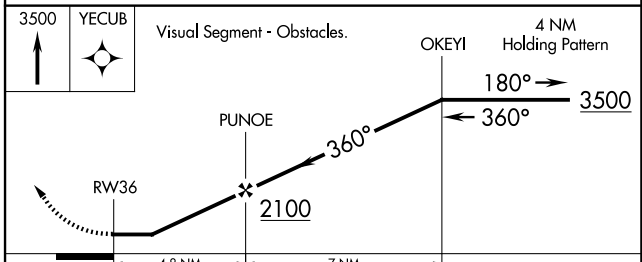
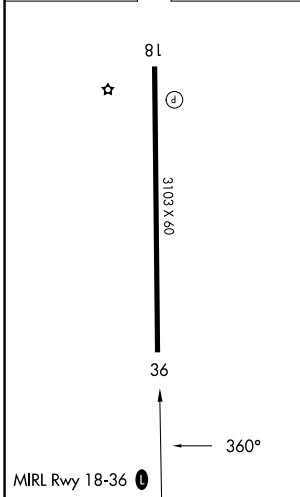
**▽** Use Brookhaven altimeter setting; when not received, use Jackson-Medgar Wiley Evers Intl altimeter setting. DME/DME RNP-0.3 NA. Procedure NA at night.  
**▲ NA** Rwy 18, 36 helicopter visibility reduction below 1 SM NA.

MISSED APPROACH: Climb to 3500 direct YECUB and hold.

1R7 AWOS-3P <b>118.125</b>	JAN ASOS <b>121.05</b>	MEMPHIS CENTER <b>125.975 307.275</b>	UNICOM <b>122.8 (CTAF) 0</b>
-------------------------------	---------------------------	--	---------------------------------



ELEV 555	TDZE 555
----------	----------



CATEGORY	A	B	C	D
LP MDA	1100-1	545 (600-1)	1100-1 $\frac{5}{8}$ 545 (600-1 $\frac{5}{8}$ )	NA
LNAV MDA	1120-1	565 (600-1)	1120-1 $\frac{5}{8}$ 565 (600-1 $\frac{5}{8}$ )	NA
CIRCLING	1120-1 565 (600-1)	1160-1 605 (700-1)	1260-2 705 (800-2)	NA

MAGEE, MISSISSIPPI  
Orig-A 25MAY17

31°52'N-89°48'W

# RNAV (GPS) RWY 36

MAGEE MUNI (17M)

SC-4, 11 JUN 2026 to 09 JUL 2026