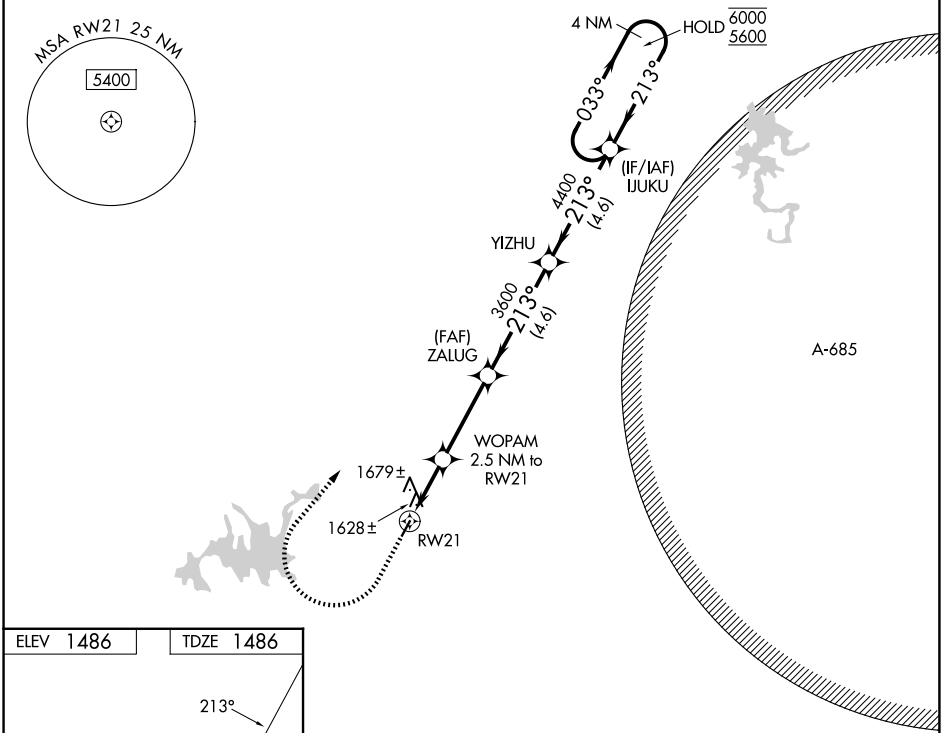


WAAS CH <b>86641</b> <b>W21A</b>	APP CRS <b>213°</b>	Rwy Ldg TDZE <b>1486</b> Apt Elev <b>1486</b>
--	------------------------	---

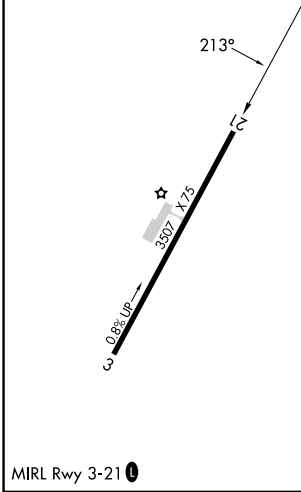
# RNAV (GPS) RWY 21

GILMER COUNTY (49A)

RNP APCH - GPS.		MISSED APPROACH: Climb to 2500 then climbing right turn to 5700 direct IJUKU and hold, continue climb-in-hold to 5700.
Procedure NA at night. Rwy 21 helicopter visibility reduction below 1 SM NA.		
AWOS-3 <b>118.075</b>	ATLANTA CENTER <b>133.1 342.425</b>	UNICOM <b>123.0 (CTAF)</b>



ELEV <b>1486</b>	TDZE <b>1486</b>
------------------	------------------



2500	5700	IJUKU	Visual Segment - Obstacles.	IJUKU	4 NM Holding Pattern
↑	↷	✧			
RW21		WOPAM 2.5 NM to RW21	ZALUG	YIZHU	4 NM Holding Pattern
	2400	3600	4400	6000	5600
	2.5 NM	3.4 NM	4.6 NM	4.6 NM	
CATEGORY	A	B	C	D	
LP MDA	1880-1	394 (400-1)	1880-1½	394 (400-1½)	
LNAV MDA	1940-1	454 (500-1)	1940-1¾	454 (500-1¾)	
CIRCLING	1980-1 494 (500-1)	2560-1½ 1074 (1100-1½)	2560-3	1074 (1100-3)	

SE-4, 11 JUN 2026 to 09 JUL 2026

SE-4, 11 JUN 2026 to 09 JUL 2026