

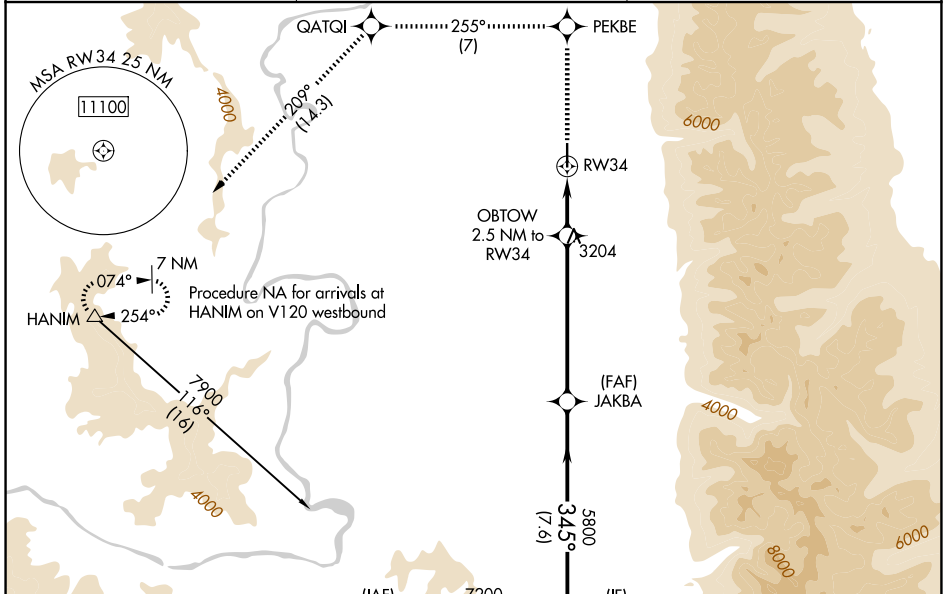
|  |                        |                             |   |
|--|------------------------|-----------------------------|---|
| WAAS<br>CH <b>86614</b><br><b>W34A</b> | APP CRS<br><b>345°</b> | Rwy Ldg<br>TDZE<br>Apt Elev | <b>4798</b><br><b>3081</b><br><b>3086</b> |
|--|------------------------|-----------------------------|---|

# RNAV (GPS) RWY 34

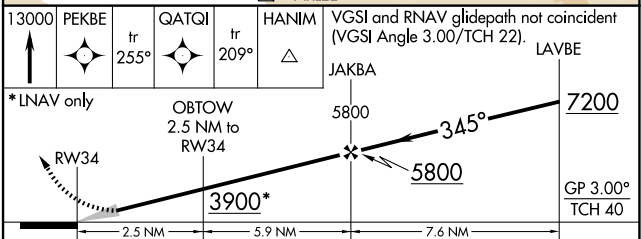
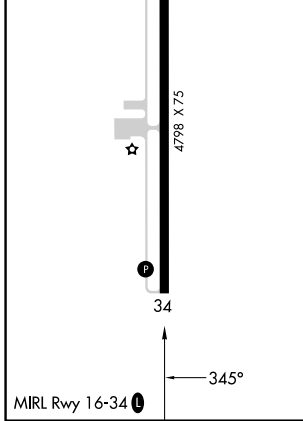
RONAN (7S)

|   |   |
|---|---|
| RNP APCH.   | MISSED APPROACH: Climb to 13000 direct PEKBE and on track 255° to QATQI and on track 209° to HANIM and hold, continue climb-in-hold to 13000. |
| <p>Baro-VNAV NA when using Missoula altimeter setting. For uncompensated Baro-VNAV systems, procedure NA below -21°C or above 54°C. Circling NA east of Rwy 16-34. When local altimeter setting not received, use Missoula altimeter setting and increase LPV DA to 3545 and all visibilities 3/8 SM, LNAV/VNAV DA to 3545 and all visibilities 3/8 SM; and increase all MDAs 120 feet.</p> |   |

|                          |   |                                |
|--------------------------|---|--------------------------------|
| AWOS-3<br><b>119.925</b> | SALT LAKE CITY CENTER<br><b>127.075 244.875</b> | AUNICOM<br><b>122.8 (CTAF)</b> |
|--------------------------|---|--------------------------------|



|           |           |
|-----------|-----------|
| ELEV 3086 | TDZE 3081 |
|-----------|-----------|



| CATEGORY     | A       | B            | C  | D |
|--------------|---------|--------------|----|---|
| LPV DA       | 3438-1  | 357 (400-1)  | NA |   |
| LNAV/VNAV DA | 3438-1¼ | 357 (400-1¼) | NA |   |
| LNAV MDA     | 3520-1  | 439 (500-1)  | NA |   |
| CIRCLING     | 3560-1  | 474 (500-1)  | NA |   |

NW-1, 11 JUN 2026 to 09 JUL 2026

NW-1, 11 JUN 2026 to 09 JUL 2026