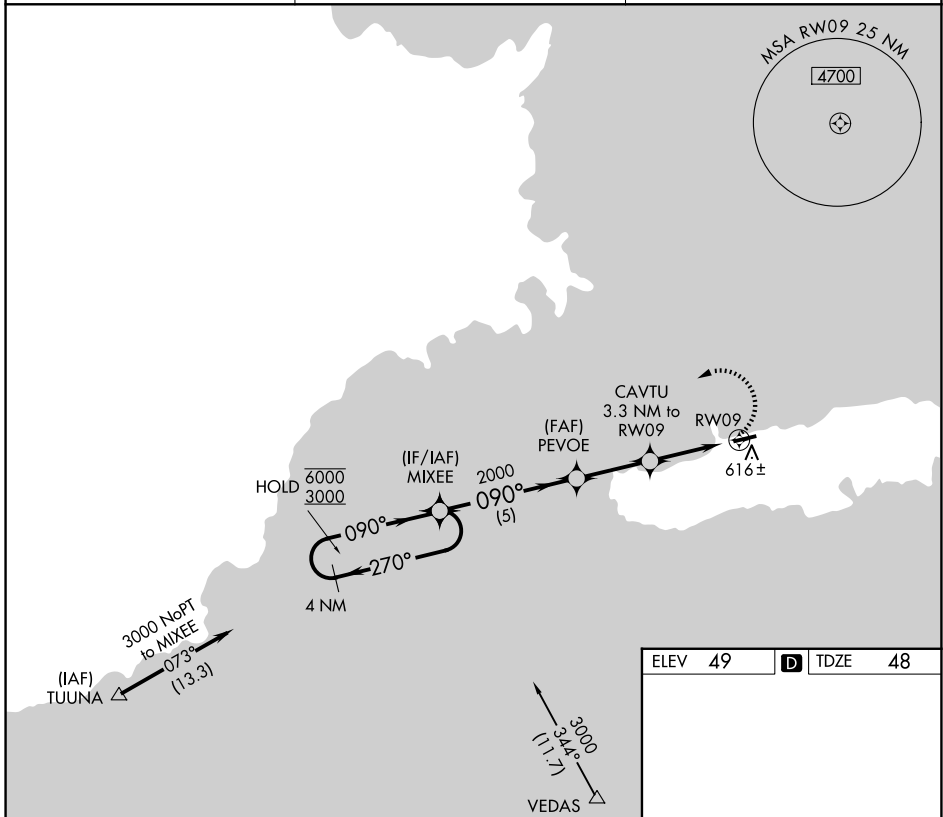


APP CRS	Rwy Ldg	4094
090°	TDZE	48
	Apt Elev	49

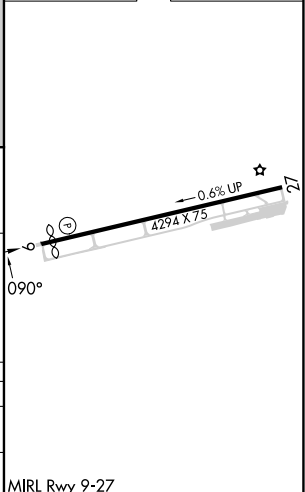
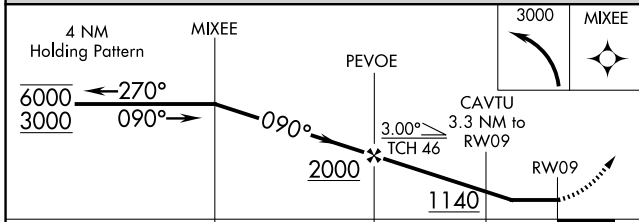
RNAV (GPS) RWY 9

ANTONIO RIVERA RODRIGUEZ (VQS)(TJVQ)

RNP APCH-GPS.		MISSED APPROACH: Climbing left turn to 3000 direct MIXEE and hold.
⚠ NA Circling NA south of Rwy 9-27. Rwy 9 helicopter visibility reduction below 1 SM NA. Procedure NA at night. Use SJU/TJSJ altimeter setting.		
SJU/TJSJ ASOS 125.8	SAN JUAN CERAP APP CON 128.65 279.6	UNICOM 123.0 (CTAF)



ELEV 49	D TDZE 48
---------	------------------



CATEGORY	A	B	C	D
LNVA MDA	880-1 832 (900-1)	880-1¼ 832 (900-1¼)		NA
CIRCLING	880-1¼ 831 (900-1¼)			NA

MIRL Rwy 9-27

SE-3, 11 JUN 2026 to 09 JUL 2026

SE-3, 11 JUN 2026 to 09 JUL 2026