

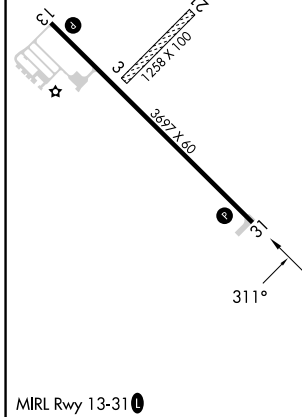
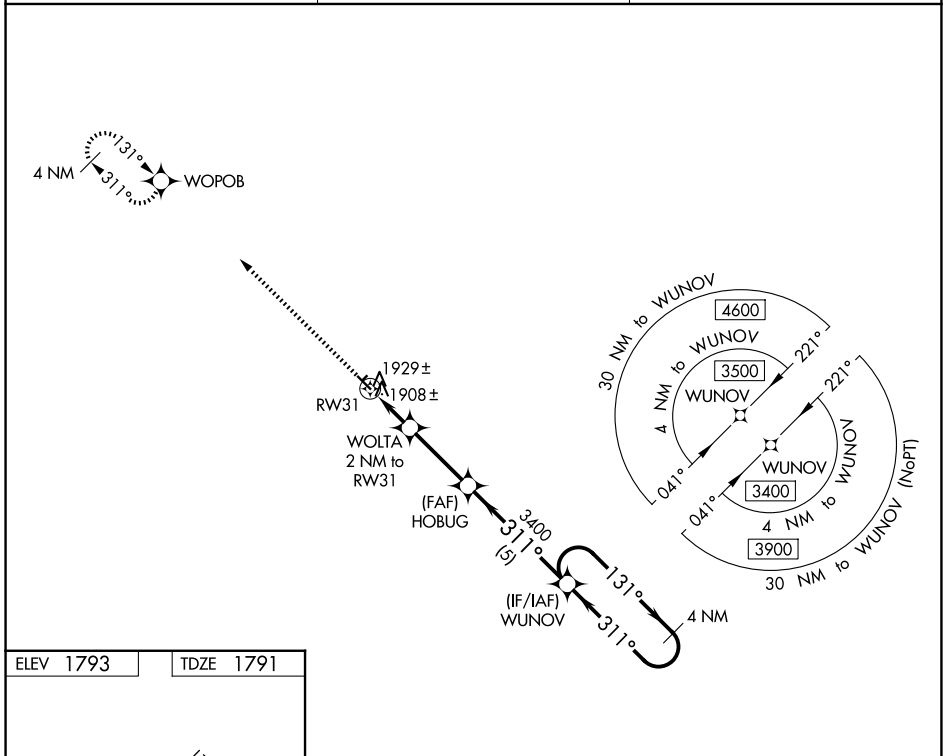
WAAS CH <b>63240</b> <b>W31A</b>	APP CRS <b>311°</b>	Rwy Ldg TDZE Apt Elev	<b>3697</b> <b>1791</b> <b>1793</b>
--	------------------------	-----------------------------	---

# RNAV (GPS) RWY 31

CLARK COUNTY (8D7)

<p><b>∇</b> Rwy 31 helicopter visibility reduction below 3/4 SM NA.  <b>▲</b> NA DME/DME RNP-0.3 NA. Use Watertown altimeter setting.                  Circling Rwys 3, 21 NA.</p>	<p>MISSED APPROACH: Climb to 3400 direct WOPOB and hold.</p>
--	--

<p>ATY ASOS <b>126.625</b></p>	<p>MINNEAPOLIS CENTER <b>128.5 306.2</b></p>	<p>UNICOM <b>122.8 (CTAF) 0</b></p>
------------------------------------	--	---



ELEV 1793	TDZE 1791			
3400 WOPOB	HOBUG	WUNOV	4 NM Holding Pattern	
<p>WOLTA 2 NM to RW31 ≤ 3.00° TCH 40</p> <p>2460</p> <p>2 NM    2.9 NM    5 NM</p>	<p>311°</p> <p>3400</p> <p>131°</p> <p>311°</p> <p>3400</p>			
CATEGORY	A	B	C	D
LP MDA	2220-1	429 (500-1)		NA
LNAV MDA	2240-1	449 (500-1)		NA
CIRCLING	2340-1 547 (600-1)	2380-1 587 (600-1)		NA

NC-1, 11 JUN 2026 to 09 JUL 2026

NC-1, 11 JUN 2026 to 09 JUL 2026