

APP CRS	Rwy Ldg	<b>5000</b>
<b>198°</b>	TDZE	<b>717</b>
	Apt Elev	<b>718</b>

# RNAV (GPS) RWY 20

BILL PUGH FLD (M22)

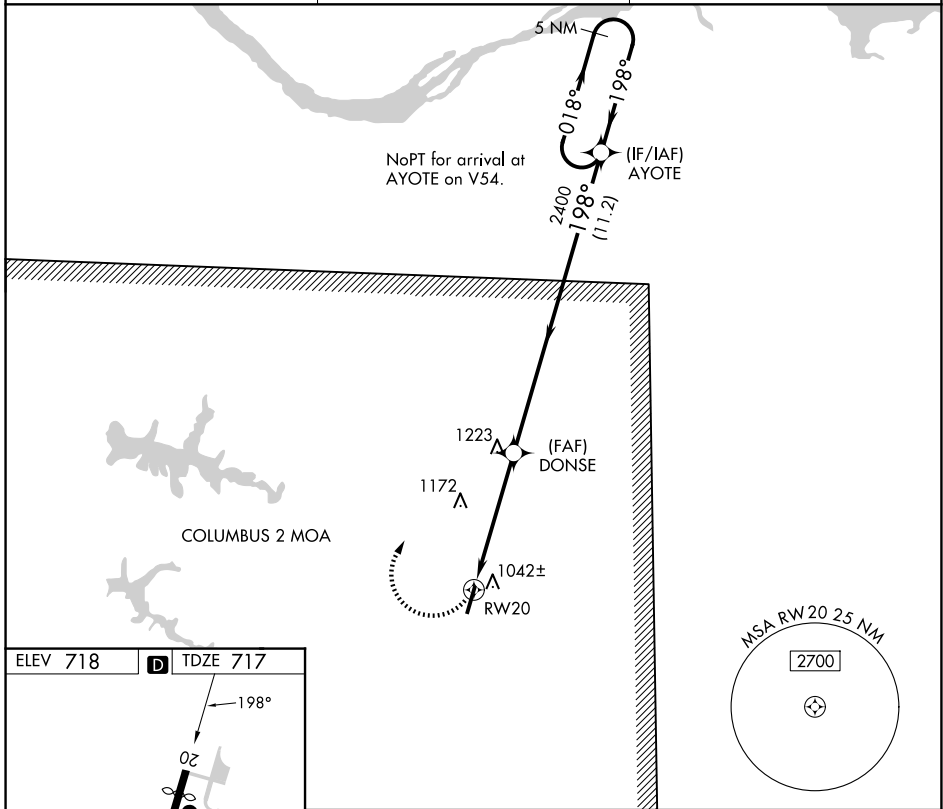
RNP APCH-GPS.

**▼** Use Muscle Shoals altimeter setting; when not received, use Decatur altimeter setting and increase all MDA 60 feet, increase LNAV Cat C/D visibility 1/8 SM and Circling Cat A visibility 1/4 SM. Procedure NA at night. Rwy 20 helicopter visibility reduction below 1 SM NA.

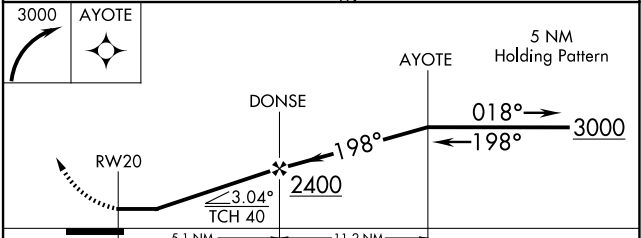
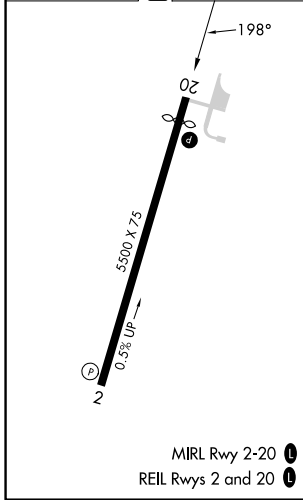
**▲ NA**

**MISSED APPROACH:** Climbing right turn to 3000 direct AYOTE and hold.

MSL ASOS <b>119.425</b>	MEMPHIS CENTER <b>120.8 307.0</b>	UNICOM <b>122.8 (CTAF) 0</b>
----------------------------	--------------------------------------	---------------------------------



ELEV 718	<b>D</b>	TDZE 717
----------	----------	----------



CATEGORY	A	B	C	D
LNAV MDA	1360-1	643 (700-1)	1360-1 <sup>7</sup> / <sub>8</sub>	643 (700-1 <sup>7</sup> / <sub>8</sub> )
CIRCLING	1520-1 802 (900-1)	1540-1 <sup>1</sup> / <sub>4</sub> 822 (900-1 <sup>1</sup> / <sub>4</sub> )	1720-3	1002 (1100-3)

SE-4, 11 JUN 2026 to 09 JUL 2026

SE-4, 11 JUN 2026 to 09 JUL 2026