

WAAS CH <b>63134</b> <b>W21A</b>	APP CRS <b>215°</b>	Rwy Ldg TDZE Apt Elev	<b>3398</b> <b>941</b> <b>943</b>
--	------------------------	-----------------------------	---

# RNAV (GPS) RWY 21

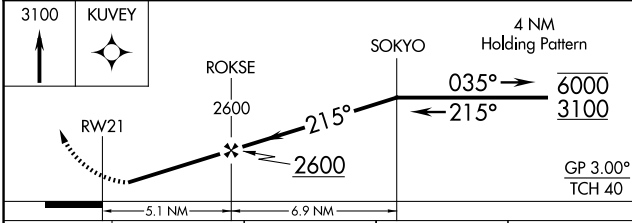
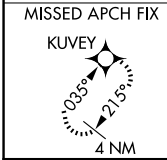
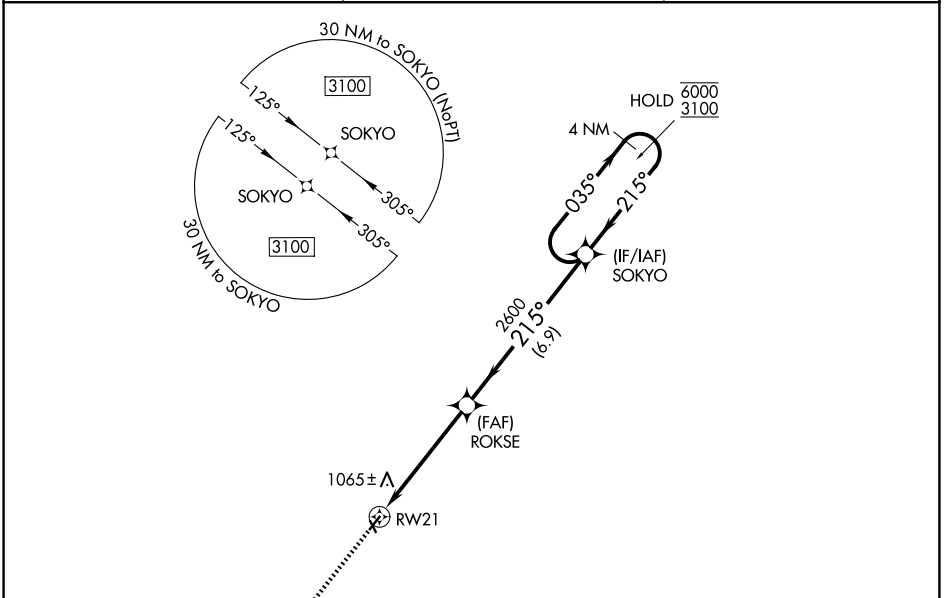
MIAMI COUNTY (K81)

RNP APCH - GPS.

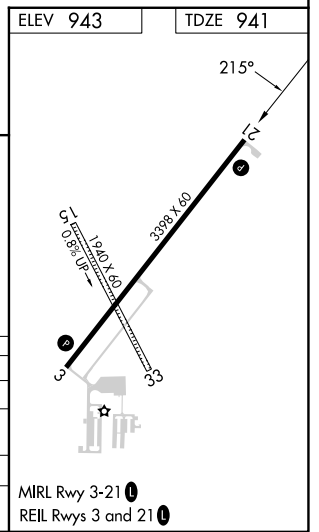
**NA** Baro-VNAV NA. Use New Century Aircenter altimeter setting; when not received, use Johnson County Exec altimeter setting and increase all DA 8 feet and all MDA 20 feet; increase LPV and LNAV/VNAV all Cnts visibility 1/8 mile. Rwy 21 helicopter visibility reduction below 3/4 SM NA. Circling NA

MISSED APPROACH: Climb to 3100 direct KUYEV and hold.

IXD ASOS <b>135.325</b>	KANSAS CITY APP CON <b>118.9 251.075</b>	UNICOM <b>122.8 (CTAF) 0</b>
----------------------------	---	---------------------------------



CATEGORY	A	B	C	D
LPV DA	1252-1	311 (400-1)		NA
LNAV/VNAV DA	1429-1 1/8	488 (500-1 1/8)		NA
LNAV MDA	1520-1	579 (600-1)		NA
CIRCLING	1580-1	637 (700-1)		NA



NC-2, 11 JUN 2026 to 09 JUL 2026

NC-2, 11 JUN 2026 to 09 JUL 2026