

WAAS CH <b>82131</b> <b>W21A</b>	APP CRS <b>211°</b>	Rwy Ldg <b>4003</b> TDZE <b>728</b> Apt Elev <b>735</b>
--	------------------------	---

# RNAV (GPS) RWY 21

MELBOURNE MUNI/JOHN E MILLER FLD (42A)

RNP APCH - GPS.

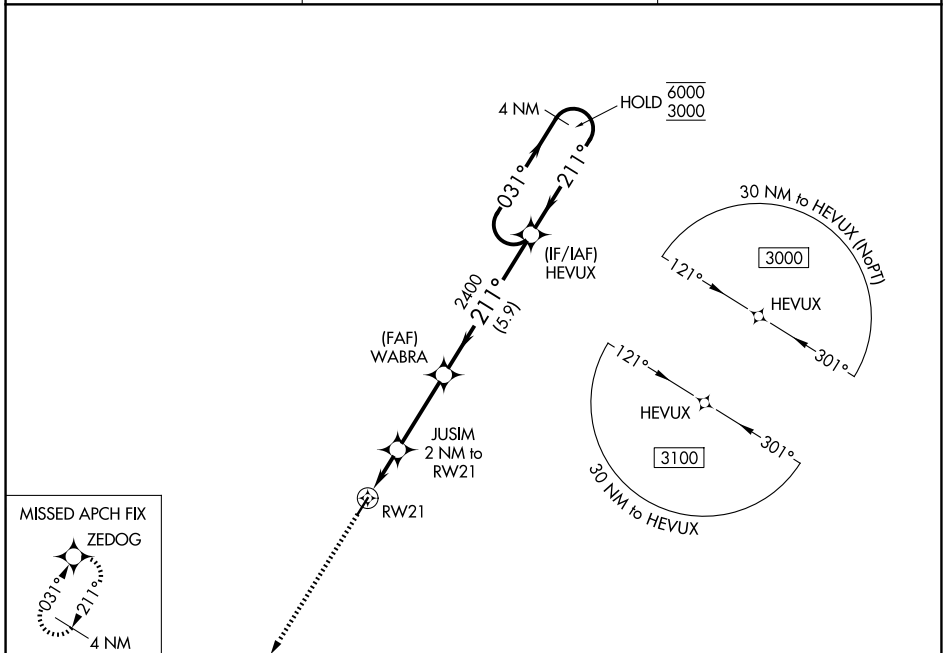
**▼** Rwy 21 helicopter visibility reduction below 3/4 SM NA. For uncompensated Baro-VNAV systems, LNAV/VNAV NA below -16°C or above 54°C.

MISSED APPROACH: Climb to 3100 direct ZEDOG and hold.

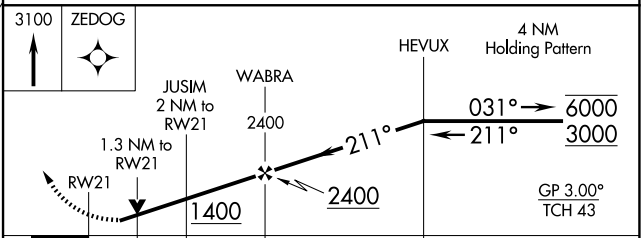
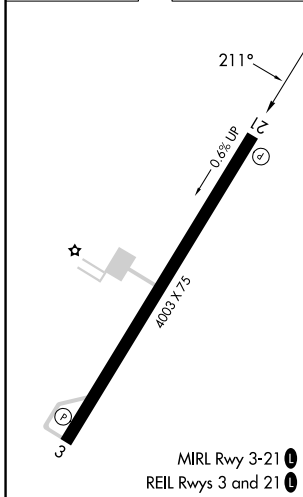
AWOS-3PT  
**121.575**

MEMPHIS CENTER  
**126.85 281.55**

CTAF  
**122.9**



ELEV <b>735</b>	TDZE <b>728</b>
-----------------	-----------------



CATEGORY	A		B		C	D
	1017-7/8	289 (300-7/8)	432 (500-1 1/4)	505 (600-1)		
LPV DA	1017-7/8	289 (300-7/8)	432 (500-1 1/4)	505 (600-1)	NA	NA
LNAV/VNAV DA	1160-1 1/4	432 (500-1 1/4)	505 (600-1)	505 (600-1)	NA	NA
LNAV MDA	1160-1	432 (500-1)	505 (600-1)	505 (600-1)	NA	NA
CIRCLING	1240-1	505 (600-1)	505 (600-1)	505 (600-1)	NA	NA

SC-1, 11 JUN 2026 to 09 JUL 2026

SC-1, 11 JUN 2026 to 09 JUL 2026