

WAAS CH 63237 W19A	APP CRS 192°	Rwy Ldg 3202 TDZE 236 Apt Elev 236
--	------------------------	---

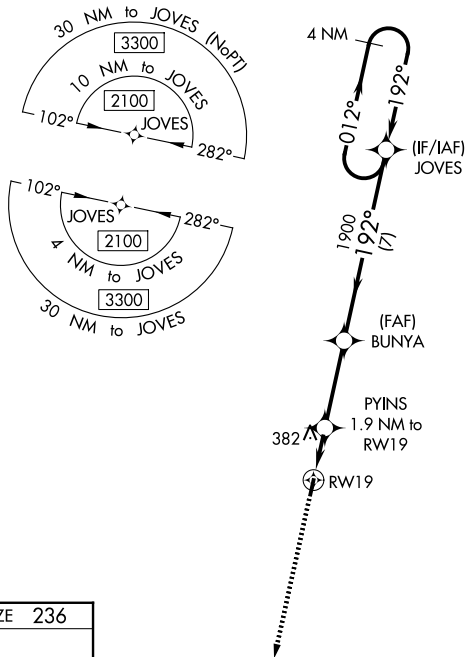
RNAV (GPS) RWY 19

SHERIDAN-GRANT COUNTY RGNL (9M8)

NA Baro-VNAV NA. DME/DME RNP-0.3 NA. Helicopter visibility reduction below $\frac{3}{4}$ SM NA. Night landing: Rwy 1 NA. Use Pine Bluff altimeter setting, when not received, use Little Rock altimeter setting and increase all DA 5 feet and all MDA 20 feet: increase Circling Cat C visibility $\frac{1}{4}$ mile.

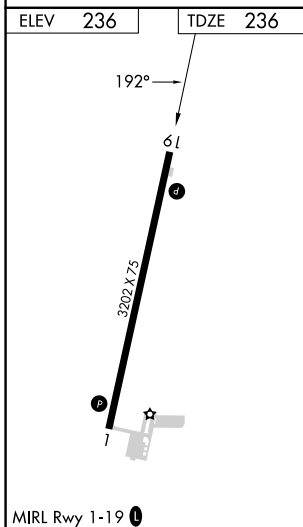
MISSED APPROACH:
Climb to 1900 direct NEONS and hold.

PBF ASOS 120.775	LITTLE ROCK APP CON 135.4 353.6	UNICOM 122.8 (CTAF)
----------------------------	---	-------------------------------



SC-1, 11 JUN 2026 to 09 JUL 2026

SC-1, 11 JUN 2026 to 09 JUL 2026



1900	NEONS	VGSi and RNAV glidepath not coincident (VGSi Angle 3.25/TCH 43).		JOVES	4 NM Holding Pattern
		PYINS 1.9 NM to RW19	BUNYA 1900		
				2100	
		880*	1900		GP 3.00° TCH 40
		1.9 NM	3.2 NM	7 NM	
CATEGORY	A	B	C	D	
LPV DA	590-1 $\frac{1}{4}$	354 (400-1 $\frac{1}{4}$)		NA	
LNAV/VNAV DA	682-1 $\frac{1}{2}$	446 (500-1 $\frac{1}{2}$)		NA	
LNAV MDA	700-1	464 (500-1)	700-1 $\frac{3}{8}$ 464 (500-1 $\frac{3}{8}$)	NA	
CIRCLING	740-1 504 (600-1)	840-1 604 (700-1)	960-2 724 (800-2)	NA	