

WAAS CH <b>69433</b> <b>W36A</b>	APP CRS <b>001°</b>	Rwy Ldg TDZE Apt Elev	<b>4021</b> <b>219</b> <b>219</b>
--	------------------------	-----------------------------	---

# RNAV (GPS) RWY 36

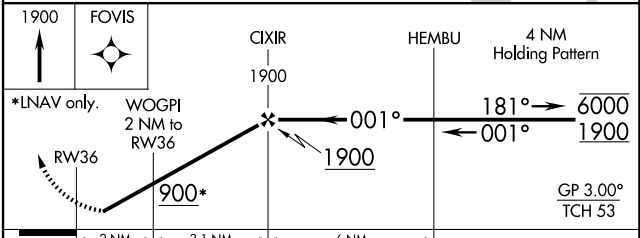
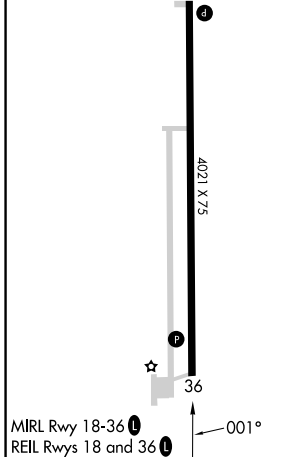
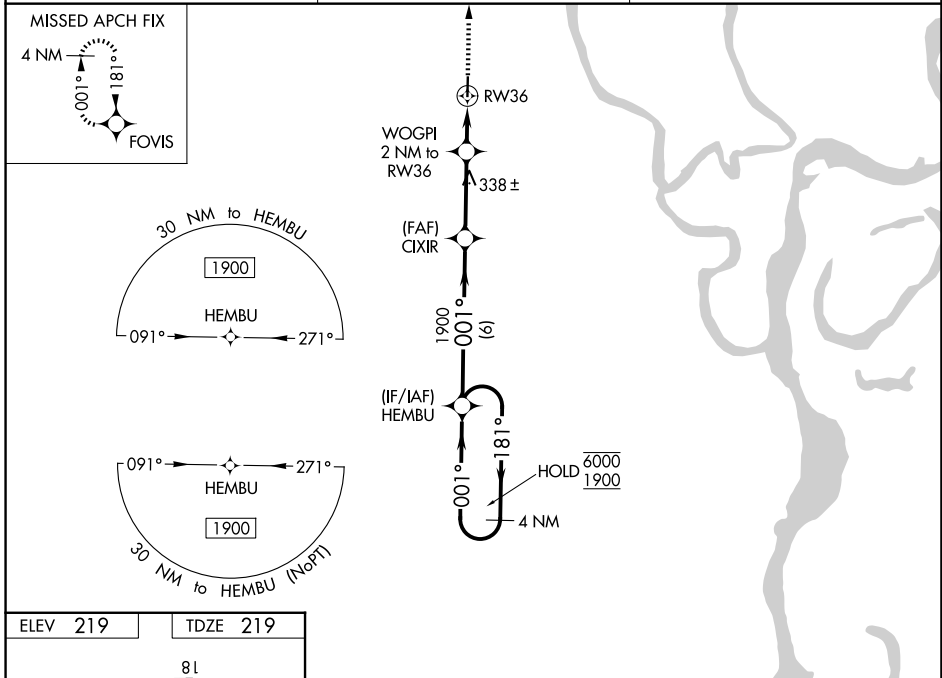
MARIANNA/LEE COUNTY-STEVE EDWARDS FLD (6M7)

RNP APCH

**⚠** Rwy 36 helicopter visibility reduction below 3/4 SM NA. Baro-VNAV NA. Use Tunica altimeter setting; when not received, use West Memphis altimeter setting and increase LPV DA to 555 feet; LNAV/VNAV DA to 666 feet and all MDA 40 feet; increase Circling Cat C visibility 1/4 SM.

MISSED APPROACH: Climb to 1900 direct FOVIS and hold.

UTA AWOS-3 <b>118.075</b>	MEMPHIS CENTER <b>135.3 335.8</b>	UNICOM <b>122.8 (CTAF)</b>
------------------------------	--------------------------------------	-------------------------------



CATEGORY	A	B	C	D
LPV DA	527-1		308 (400-1)	NA
LNAV/VNAV DA	638-1 3/8		419 (500-1 3/8)	NA
LNAV MDA	660-1	441 (500-1)	660-1 3/8 441 (500-1 3/8)	NA
CIRCLING	920-1	701 (800-1)	920-2 701 (800-2)	NA

# RNAV (GPS) RWY 36

SC-1, 11 JUN 2026 to 09 JUL 2026

SC-1, 11 JUN 2026 to 09 JUL 2026