

WAAS CH <b>63000</b> <b>W30A</b>	APP CRS <b>300°</b>	Rwy Idg <b>3482</b> TDZE <b>5</b> Apt Elev <b>5</b>
--	------------------------	---

# RNAV (GPS) RWY 30

MUSTANG BEACH (R.A.S)

**⚠** DME/DME RNP-0.3 NA. For uncompensated Baro-VNAV systems, LNAV/VNAV NA below -1.5°C (5°F) or above 44°C (111°F). If local altimeter setting not received, use Corpus Christi Intl altimeter setting and increase all DAs/MDAs 60 feet. Baro-VNAV and VDP NA when using Corpus Christi Intl altimeter setting.

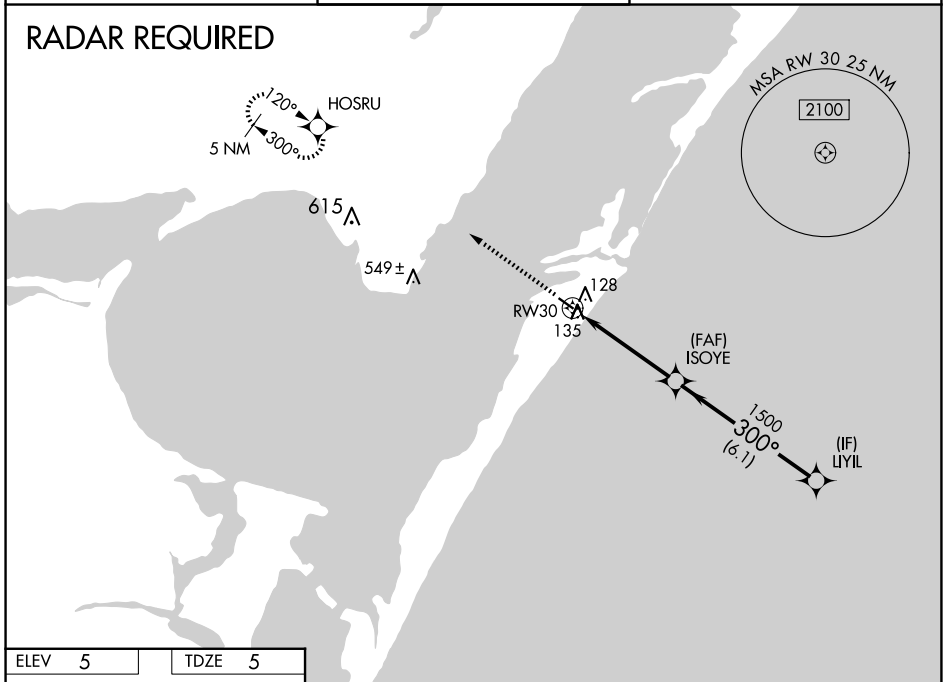
MISSED APPROACH: Climb to 2000 direct HOSRU and hold.

AWOS-3  
**118.425**

CORPUS APP CON  
**125.4 307.9**

CTAF  
**122.9**

## RADAR REQUIRED

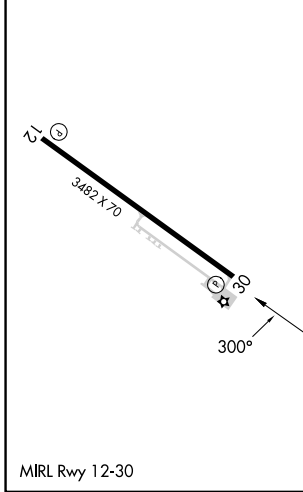
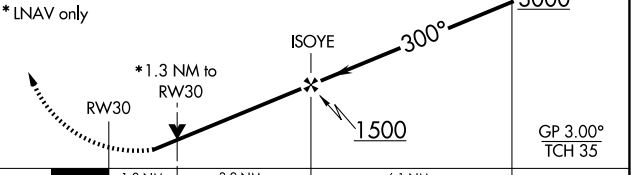


SC-3, 11 JUN 2026 to 09 JUL 2026

SC-3, 11 JUN 2026 to 09 JUL 2026

ELEV 5	TDZE 5
--------	--------

2000 HOSRU  
 ↑ ✦  
 VGSI and RNAV glidepath not coincident (VGSI Angle 3.20/TCH 22).  
 Procedure Turn NA



CATEGORY	A	B	C	D
LPV DA	362-1¼	357 (400-1¼)		NA
LNAV/VNAV DA	435-1½	430 (500-1½)		NA
LNAV MDA	440-1	435 (500-1)		NA
CIRCLING	500-1	495 (500-1)		NA