

APP CRS 333°	Rwy Ldg TDZE Apt Elev	N/A N/A 63
------------------------	-----------------------------	---------------------------------------

RNAV (GPS)-A

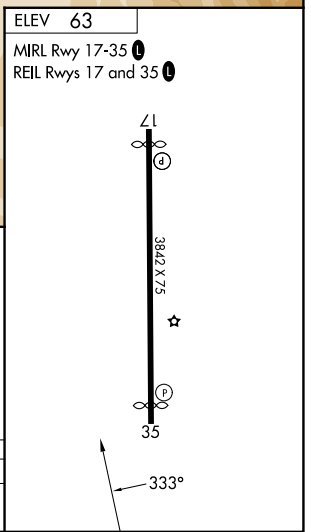
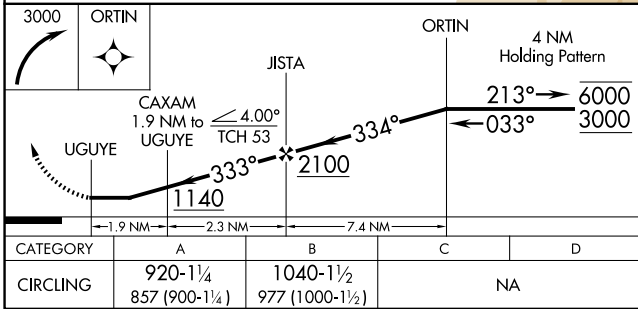
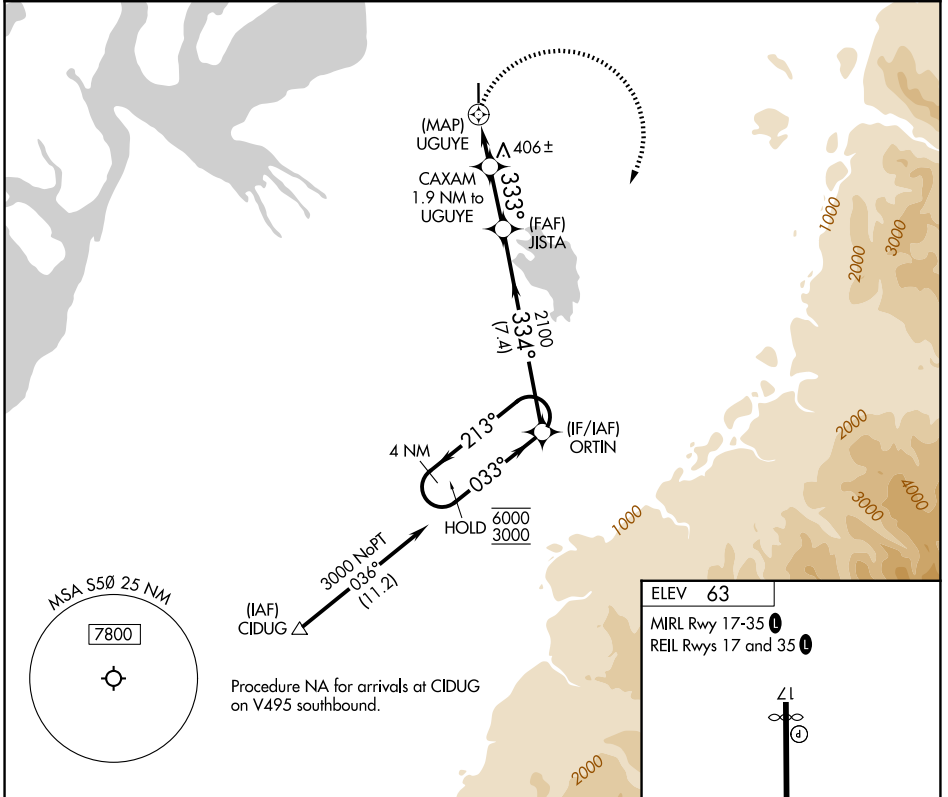
AUBURN MUNI (S50)

RNP APCH - GPS.

NA Circling NA west of Rwy 17-35. Rwy 17 and 35 helicopter visibility reduction below 1 SM NA. When Circling to Rwy 17, 35 at night, operational VGSI required, remain on or above VGSI glidepath until threshold. Use Seattle-Tacoma Intl altimeter setting. Procedure NA at night when VGSI inoperative.

MISSED APPROACH: Climbing right turn to 3000 direct ORTIN and hold.

SEA ASOS 118.0	SEATTLE APP CON 123.85	UNICOM 122.975 (CTAF)
--------------------------	----------------------------------	---------------------------------



NW-1, 11 JUN 2026 to 09 JUL 2026

NW-1, 11 JUN 2026 to 09 JUL 2026