

WAAS CH <b>86721</b> W20A	APP CRS <b>199°</b>	Rwy Idg TDZE Apt Elev	<b>4000</b> <b>958</b> <b>959</b>
---------------------------------	------------------------	-----------------------------	---

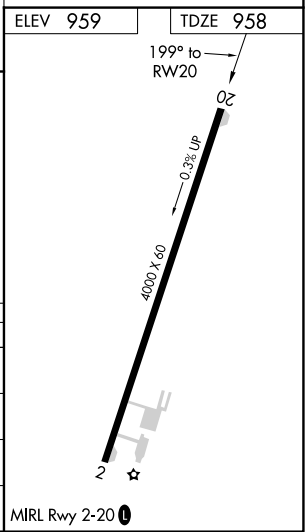
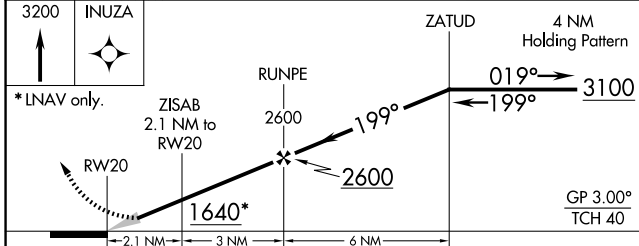
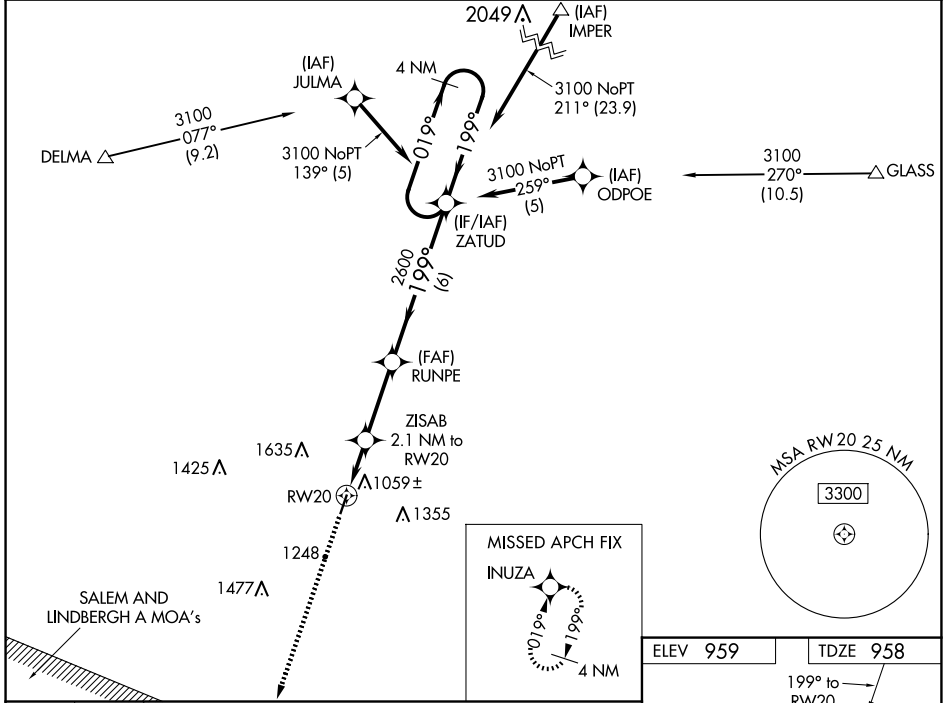
# RNAV (GPS) RWY 20

WASHINGTON COUNTY (8WC)

**Baro-VNAV NA.** DME/DME RNP-0.3 NA. Use Farmington altimeter setting, when not received, use Rolla NH altimeter setting and increase all DA/MDA 100 feet; increase LPV Cats A/B visibility 3/8 mile and increase LNAV/VNAV Cats A/B 1/4 mile. Circling NA west of Rwy 2-20.

**MISSED APPROACH:** Climb to 3200 direct INUZA and hold.

FAM AWOS-3PT <b>119.275</b>	KANSAS CITY CENTER <b>128.35 284.675</b>	UNICOM <b>123.0 (CTAF) 0</b>
--------------------------------	---	---------------------------------



CATEGORY	A	B	C	D
LPV DA	1253-1	295 (300-1)		NA
LNAV / VNAV DA	1278-1 1/8	320 (400-1 1/8)		NA
LNAV MDA	1360-1	402 (500-1)		NA
CIRCLING	1580-1 621 (700-1)	1600-1 641 (700-1)		NA

NC-3, 11 JUN 2026 to 09 JUL 2026

NC-3, 11 JUN 2026 to 09 JUL 2026