

(HURCN4.HURCN) 24081

AL-10263 (FAA)

MIAMI HOMESTEAD GENERAL AVIATION (X51)

# HURCN FOUR DEPARTURE (RNAV)

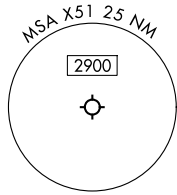
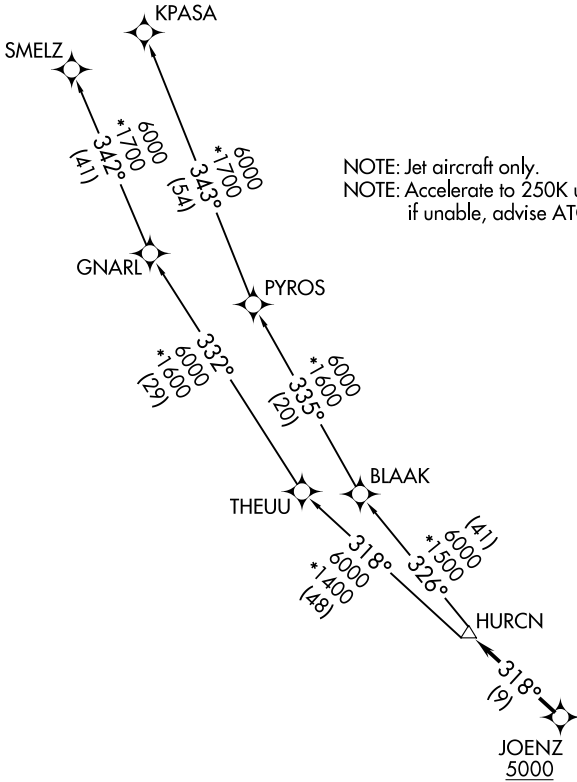
HOMESTEAD, FLORIDA

RNAV-1 DME/DME/IRU or GPS.

RADAR required.

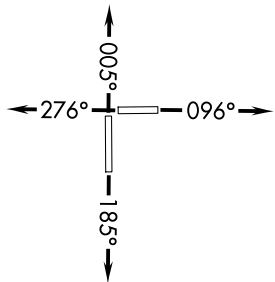
**TOP ALTITUDE:  
ASSIGNED BY ATC**

MIAMI DEP CON  
125.5 354.1  
AWOS-3  
118.375  
CTAF  
122.8



### TAKEOFF MINIMUMS

- Rwy 10: Standard with minimum climb of 500'/NM to 2400.
- Rwy 18: Standard with minimum climb of 500'/NM to 1800.
- Rwy 28: Standard with minimum climb of 500'/NM to 1900.
- Rwy 36: Standard with minimum climb of 500'/NM to 2200.



NOTE: Chart not to scale.

(CONTINUED ON FOLLOWING PAGE)

HURCN FOUR DEPARTURE (RNAV)

HOMESTEAD, FLORIDA

(HURCN4.HURCN) 21MAR24

MIAMI HOMESTEAD GENERAL AVIATION (X51)

SE-3, 11 JUN 2026 to 09 JUL 2026

SE-3, 11 JUN 2026 to 09 JUL 2026



DEPARTURE ROUTE DESCRIPTION

TAKEOFF RUNWAY 10: Climb on heading 096° or as assigned by ATC for RADAR vectors to cross JOENZ at or above 5000, thence. . .

TAKEOFF RUNWAY 18: Climb on heading 185° or as assigned by ATC for RADAR vectors to cross JOENZ at or above 5000, thence. . .

TAKEOFF RUNWAY 28: Climb on heading 276° or as assigned by ATC for RADAR vectors to cross JOENZ at or above 5000, thence. . .

TAKEOFF RUNWAY 36: Climb on heading 005° or as assigned by ATC for RADAR vectors to cross JOENZ at or above 5000, thence. . .

. . .on track 318° to HURCN, then on transition. Maintain ATC assigned altitude. Expect clearance to filed altitude within 10 minutes after departure.

KPASA TRANSITION (HURCN4.KPASA)

SMELZ TRANSITION (HURCN4.SMELZ)

SE-3, 11 JUN 2026 to 09 JUL 2026

SE-3, 11 JUN 2026 to 09 JUL 2026