

WAAS CH <b>45901</b> <b>W34A</b>	APP CRS <b>343°</b>	Rwy Idg TDZE Apt Elev	<b>4400</b> <b>826</b> <b>840</b>
--	------------------------	-----------------------------	---

# RNAV (GPS) RWY 34

HIGGINSVILLE INDUSTRIAL MUNI (HIG)

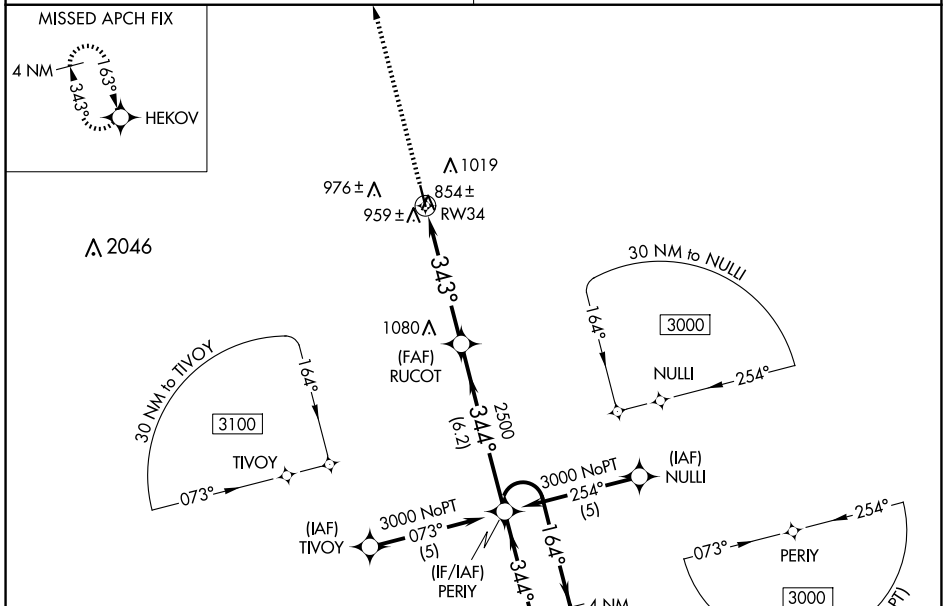
RNP APCH - GPS.

Baro-VNAV NA. Use Whiteman Air Force Base altimeter setting; when not received, use Kansas City/Lee's Summit Rgnl altimeter setting; increase LPV DA to 1190 feet and all visibilities ¼ SM; increase LNAV/VNAV DA to 1329 feet and all visibilities ¼ SM; increase all MDAs 60 feet and LNAV and Circling visibility Cats C and D ¼ SM.

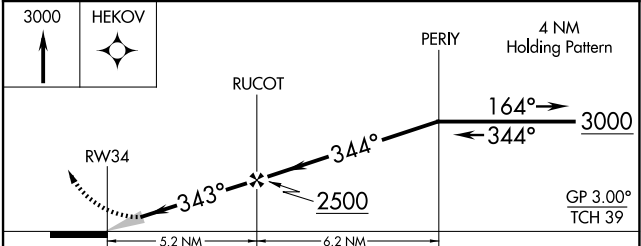
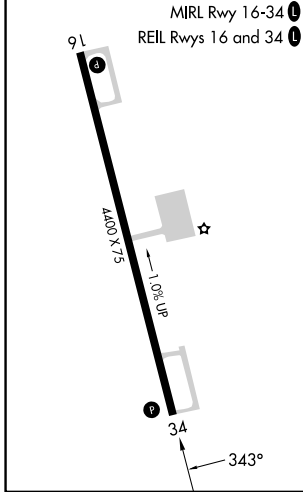
MISSED APPROACH: Climb to 3000 direct HEKOV and hold.

WHITEMAN APP CON \* **127.45 284.0**

UNICOM **122.8 (CTAF) 0**



ELEV 840	<b>D</b>	TDZE 826
----------	----------	----------



CATEGORY	A	B	C	D
LPV DA	1144-1¼ 318 (400-1¼)			
LNAV/VNAV DA	1283-1¾ 457 (500-1¾)			
LNAV MDA	1300-1	474 (500-1)	1300-1¼ 474 (500-1¼)	1300-1½ 474 (500-1½)
CIRCLING	1440-1	600 (600-1)	1440-1½ 600 (600-1½)	1460-2 620 (700-2)

NC-3, 11 JUN 2026 to 09 JUL 2026

NC-3, 11 JUN 2026 to 09 JUL 2026