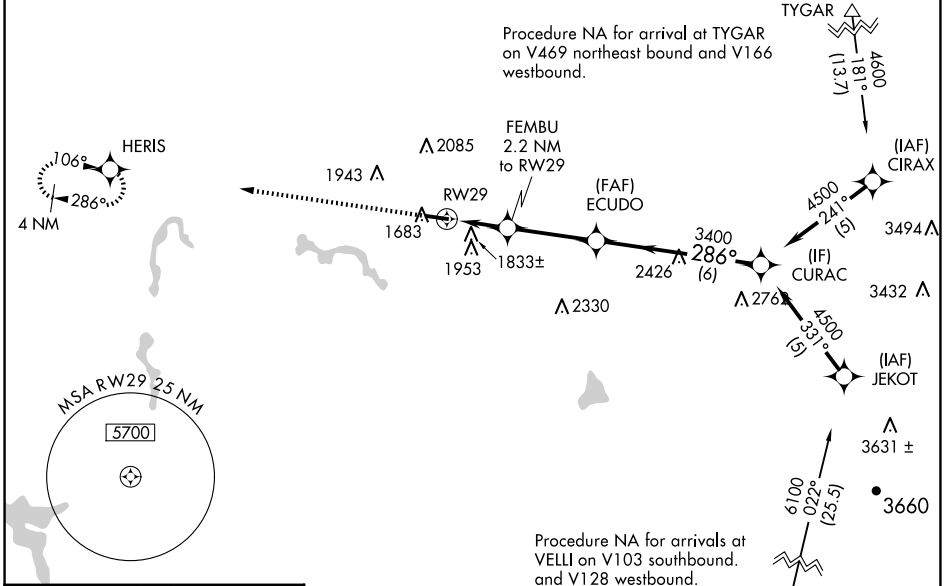


WAAS CH <b>56624</b> <b>W29A</b>	APP CRS <b>286°</b>	Rwy ldg TDZE Apt Elev	<b>4201</b> <b>1635</b> <b>1635</b>
--	------------------------	-----------------------------	---

# RNAV (GPS) RWY 29

UPSHUR COUNTY RGNL (W22)

RNP APCH.		MISSED APPROACH: Climb to 4000 direct HERIS and hold.
For uncompensated Baro-VNAV systems, LNAV/VNAV NA below -18°C or above 54°C. Rwy 29 helicopter visibility reduction below 3/4 SM NA.		
AWOS-3 <b>119.975</b>	CLARKSBURG APP CON ★ <b>121.15 284.65</b>	UNICOM <b>122.8 (CTAF) 0</b>



ELEV 1635	TDZE 1635
-----------	-----------

	4000	HERIS	VGSI and RNAV glidepath not coincident (VGSI Angle 3.00/TCH 27).	CURAC
	*LNAV only.	FEMBU 2.2 NM to RWY 29	ECUDO 3400	4500
		*1.4 NM to RWY 29		GP 3.00° TCH 40
		*2360	3400	
		1.4 NM	0.8 NM	3.2 NM
CATEGORY	A	B	C	D
LPV DA		1885-1	250 (300-1)	NA
LNAV/VNAV DA		2125-1 3/4	490 (500-1 3/4)	NA
LNAV MDA	2100-1	465 (500-1)	2100-1 3/8 465 (500-1 3/8)	NA
CIRCLING	2240-1 605 (700-1)	2260-1 625 (700-1)	2400-2 1/4 765 (800-2 1/4)	NA

MIRL Rwy 11-29 0

NE-4, 11 JUN 2026 to 09 JUL 2026

NE-4, 11 JUN 2026 to 09 JUL 2026