

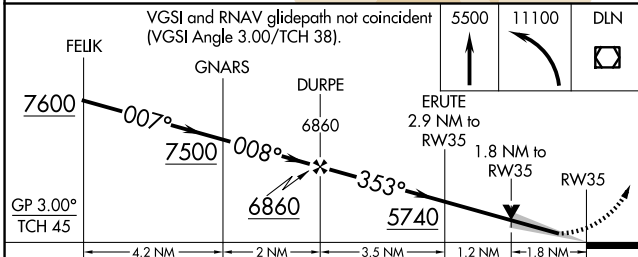
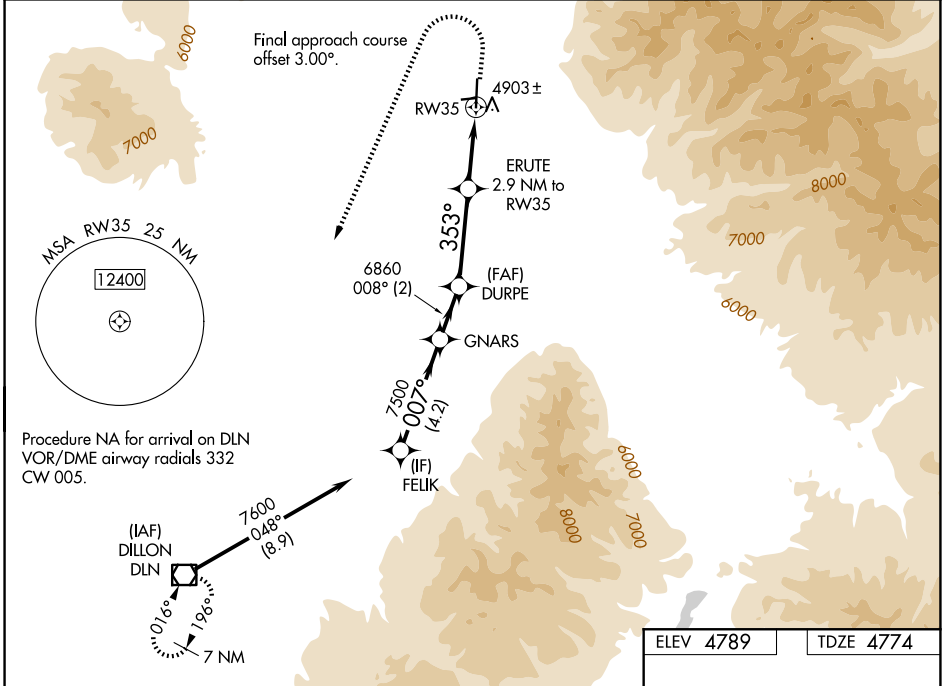
WAAS CH <b>42940</b> <b>W35A</b>	APP CRS <b>353°</b>	Rwy Ldg TDZE Apt Elev	<b>6000</b> <b>4774</b> <b>4789</b>
--	------------------------	-----------------------------	---

# RNAV (GPS) RWY 35

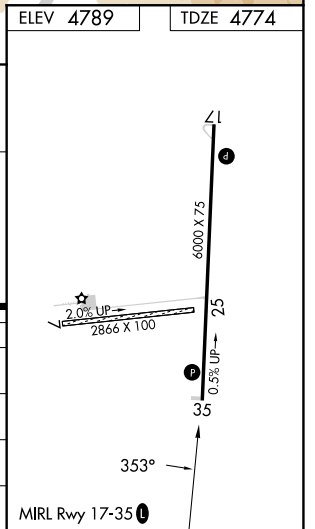
RUBY VALLEY FLD (RVF)

RNP APCH - GPS.	MISSED APPROACH: (Do not exceed 185K until DLN VOR/DME) Climb to 5500 then climbing left turn to 11100 direct DLN VOR/DME and hold, continue climb-in-hold to 11100.
<p><b>▽</b> Circling NA to Rwy 7 and 25. Circling NA east of Rwy 17-35.</p> <p><b>⚠</b> For uncompensated Baro-VNAV systems, LNAV/VNAV NA below -24°C or above 54°C.</p>	

AWOS-3PT <b>119.025</b>	SALT LAKE CENTER <b>132.4 338.3</b>	CTAF <b>122.90</b>
----------------------------	--	-----------------------



CATEGORY	A	B	C	D
LPV DA	5024-1		250 (300-1)	
LNAV/VNAV DA	5196-1¼		422 (500-1¼)	
LNAV MDA	5360-1	586 (600-1)	5360-1¾	586 (600-1¼)
CIRCLING	5360-1	571 (600-1)	5360-1¾	5460-2¼
			571 (600-1¼)	671 (700-2¼)



NW-1, 11 JUN 2026 to 09 JUL 2026

NW-1, 11 JUN 2026 to 09 JUL 2026