

WAAS CH <b>53312</b> <b>W02A</b>	APP CRS <b>023°</b>	Rwy Ldg TDZE <b>1168</b> Apt Elev <b>1178</b>
--	------------------------	---

# RNAV (GPS) RWY 2

WILLIAMSBURG-WHITLEY COUNTY (BYL)

When local altimeter setting not received, use London altimeter setting and increase DA 48 feet, MDA 60 feet and LPV all Cats visibility 1/8 mile. DME/DME RNP-0.3 NA. Visibility reduction by helicopters NA. VDP NA with London altimeter setting.

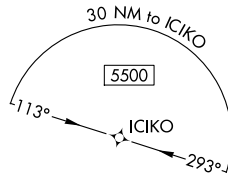
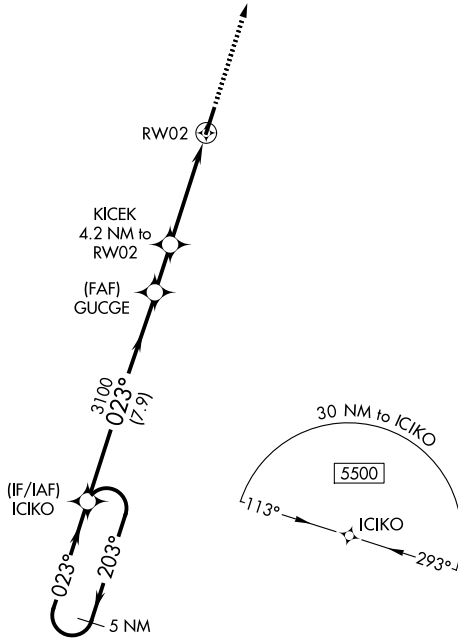
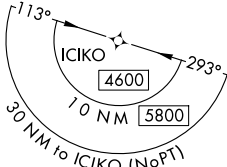
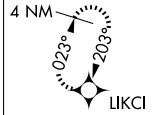
**MISSED APPROACH:**  
Climb to 4000 direct LKCI and hold.

AWOS-3  
**119.575**

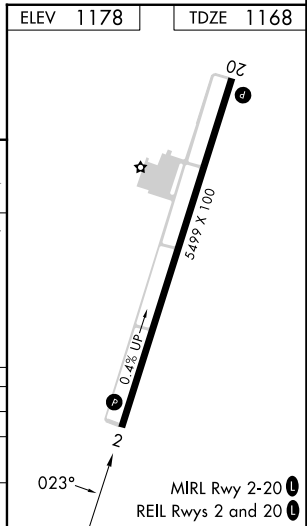
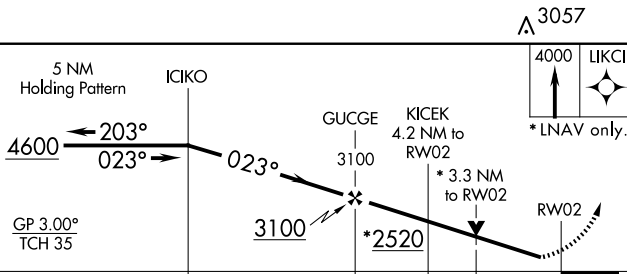
INDIANAPOLIS CENTER  
**124.625 371.925**

UNICOM  
**122.7 (CTAF) 0**

MISSED APCH FIX



ELEV 1178 TDZE 1168



CATEGORY	A	B	C	D
LPV DA	1418 7/8		250 (300-7/8)	
RNAV MDA	2300-1 1/4 1132 (1200-1 1/4)	2300-1 1/2 1132 (1200-1 1/2)	2300-3	1132 (1200-3)
CIRCLING	2300-1 1/4 1122 (1200-1 1/4)	2300-1 1/2 1122 (1200-1 1/2)	2300-3	1122 (1200-3)

SE-1, 11 JUN 2026 to 09 JUL 2026

SE-1, 11 JUN 2026 to 09 JUL 2026