

WAAS CH <b>50529</b> <b>W30A</b>	APP CRS <b>302°</b>	Rwy Ldg TDZE Apt Elev	<b>3900</b> <b>2247</b> <b>2264</b>
--	------------------------	-----------------------------	---

# RNAV (GPS) RWY 30

SHER-WOOD (PWD)

RNP APCH-GPS.

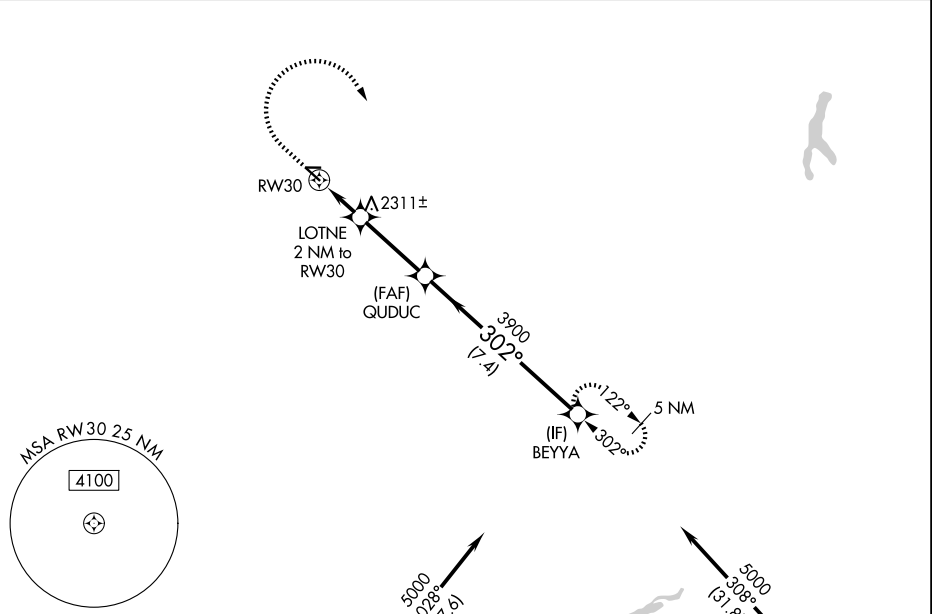
**⚠** Circling Rwy 8, 26 NA at night. For uncompensated Baro-VNAV systems, LNAV/VNAV NA below -19°C or above 54°C. When local altimeter setting not received, use Williston altimeter setting.

MISSED APPROACH: Climb to 2900 then climbing right turn to 5000 direct BEYYA and hold.

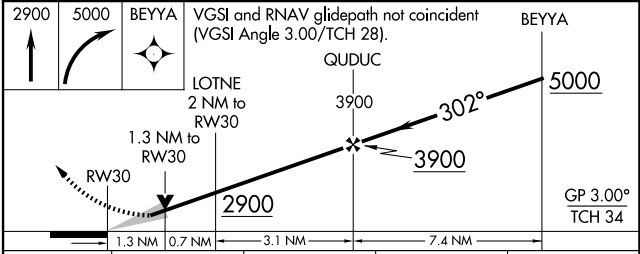
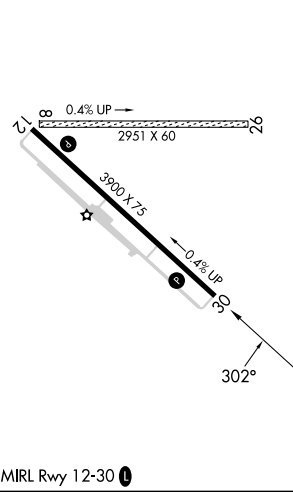
AWOS-3PT  
**135.025**

SALT LAKE CENTER  
**126.85 305.2**

UNICOM  
**122.8 (CTAF) 0**



ELEV 2264 TDZE 2247



CATEGORY	A	B	C	D
LPV DA		2562-3/4	315 (300-3/4)	
LNAV/VNAV DA		2612-1	365 (400-1)	
LNAV MDA	2680-1	433 (500-1)	2680-1 1/4	433 (500-1 1/4)
CIRCLING	2780-1	516 (600-1)	2880-1 3/4 616 (700-1 3/4)	3100-2 3/4 836 (900-2 3/4)

NW-1, 11 JUN 2026 to 09 JUL 2026

NW-1, 11 JUN 2026 to 09 JUL 2026