

WAAS CH 97504 W36A	APP CRS 355°	Rwy Idg 6610 TDZE 164 Apt Elev 166
--	------------------------	---

RNAV (GPS) RWY 36

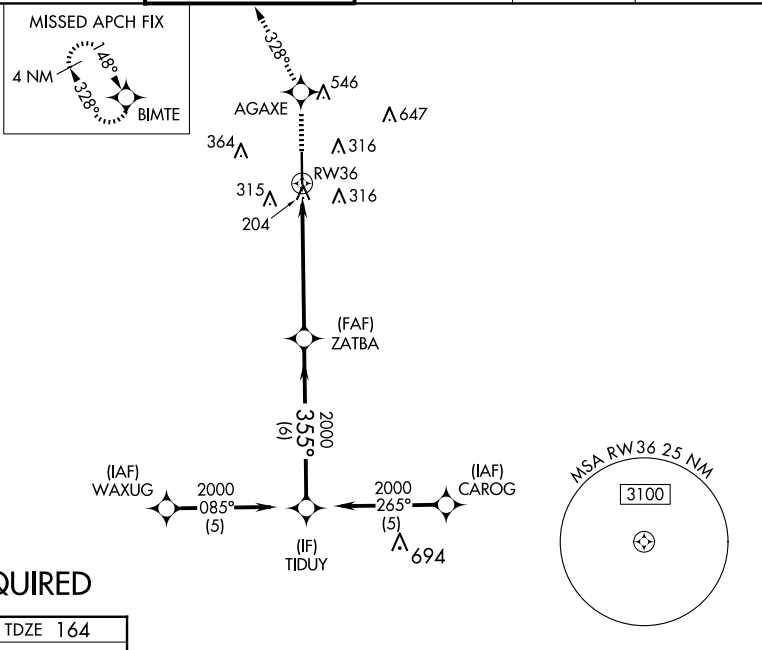
HOUSTON EXEC (TME)

RNP APCH - GPS.

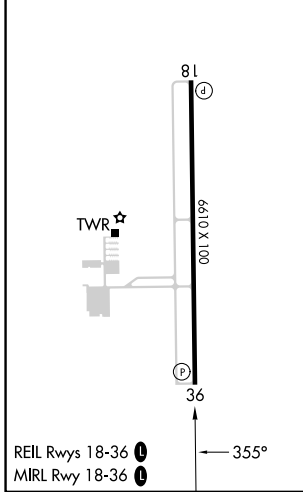
▼ Baro-VNAV NA when using David Wayne Hooks Meml altimeter setting. For uncompensated Baro-VNAV systems, LNAV/VNAV NA below -15°C and above 48°C. VDP NA when using David Wayne Hooks Meml altimeter setting. When local altimeter setting not received, use David Wayne Hooks Meml altimeter setting and increase LPV DA to 471 feet, LNAV/VNAV DA to 719 feet; increase all MDA 60 feet. Increase LNAV/VNAV visibility ¼ mile all Cats and LNAV and circling Cat C/D ¼ mile.

MISSED APPROACH:
Climb to 2000 direct
AGAXE and via 328°
track to BIMTE and
hold.

ATIS 119.525	HOUSTON APP CON 123.8 257.7	EXECUTIVE TOWER ★ 126.975 (CTAF) 0	GND CON 132.075	CLNC DEL 132.075	UNICOM 122.975
------------------------	---------------------------------------	---	---------------------------	----------------------------	--------------------------



ELEV 166	TDZE 164
-----------------	-----------------



2000	AGAXE	328° tr	BIMTE	ZATBA	TIDUY	Procedure Turn NA
*INAV only.						2000
* 1.3 NM to RWY 36						GP 3.00° TCH 40
1.3						4.3 NM
						6 NM
CATEGORY	A	B	C	D		
LPV DA	414-1		250 (300-1)			
LNAV/VNAV DA	662-1¾		498 (500-1¾)			
LNAV MDA	620-1	456 (500-1)		620-1¼	456 (500-1½)	
CIRCLING	820-1	654 (700-1)		860-2	1000-2¾	
				694 (700-2)	834 (900-2¾)	

SC-5, 11 JUN 2026 to 09 JUL 2026

SC-5, 11 JUN 2026 to 09 JUL 2026