

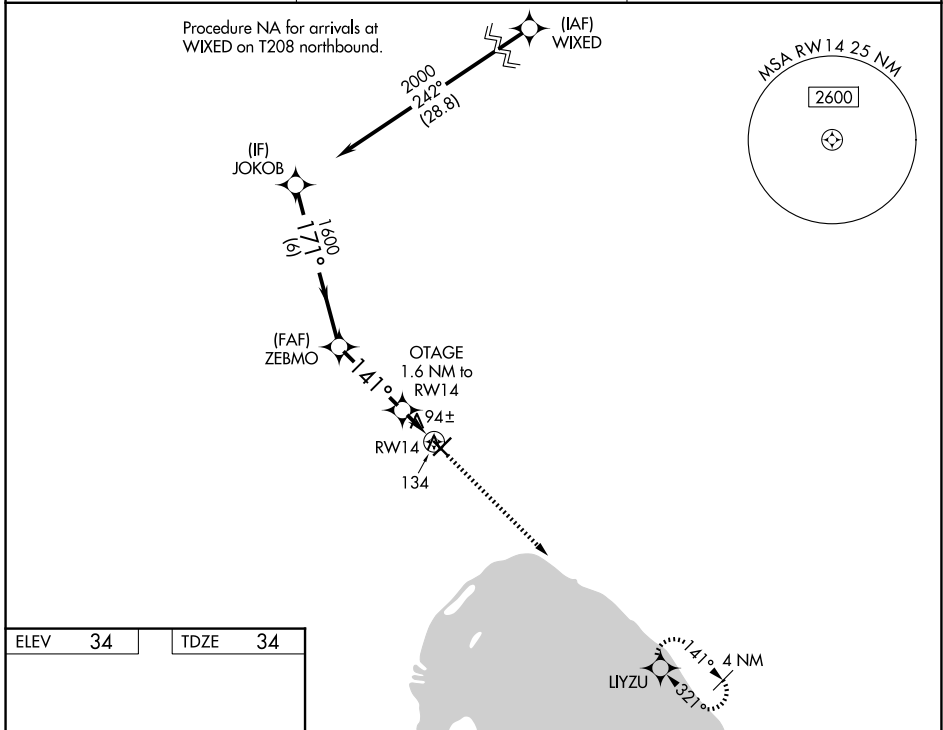
WAAS CH <b>82629</b> <b>W14A</b>	APP CRS <b>141°</b>	Rwy Ldg TDZE Apt Elev	<b>4001</b> <b>34</b> <b>34</b>
--	------------------------	-----------------------------	---------------------------------------

# RNAV (GPS) RWY 14

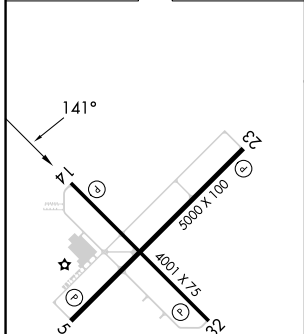
OKEECHOBEE COUNTY (OBE)

RNP APCH - GPS.	MISSED APPROACH: Climb to 2000 direct LIYZU and hold.
<b>⚠</b> Rwy 14 helicopter visibility reduction below 1 SM NA. Procedure NA at night.	

AWOS-3 <b>118.675</b>	MIAMI CENTER <b>132.25 370.9</b>	UNICOM <b>123.0 (CTAF)</b>
--------------------------	-------------------------------------	-------------------------------



ELEV 34	TDZE 34
---------	---------



MIRL Rwy 5-23 **Ⓛ**  
REIL Rwy 5 and 23 **Ⓛ**

	JOKOB	ZEBMO	OTAGE 1.6 NM to RW14	RW14
	2000	1600	580	
	171°	141°		
	6 NM	3.2 NM	1.6 NM	
CATEGORY	A	B	C	D
LP MDA		360-1	326 (400-1)	
LNAV MDA		400-1	366 (400-1)	
CIRCLING	500-1	466 (500-1)	660-1 <sup>3</sup> / <sub>4</sub> 626 (700-1 <sup>3</sup> / <sub>4</sub> )	660-2 626 (700-2)

SE-3, 11 JUN 2026 to 09 JUL 2026

SE-3, 11 JUN 2026 to 09 JUL 2026