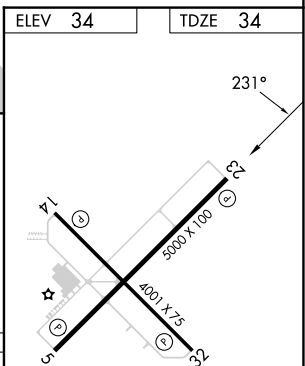
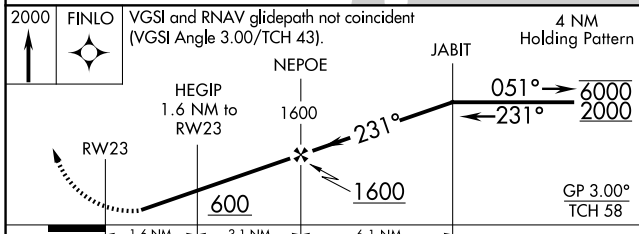
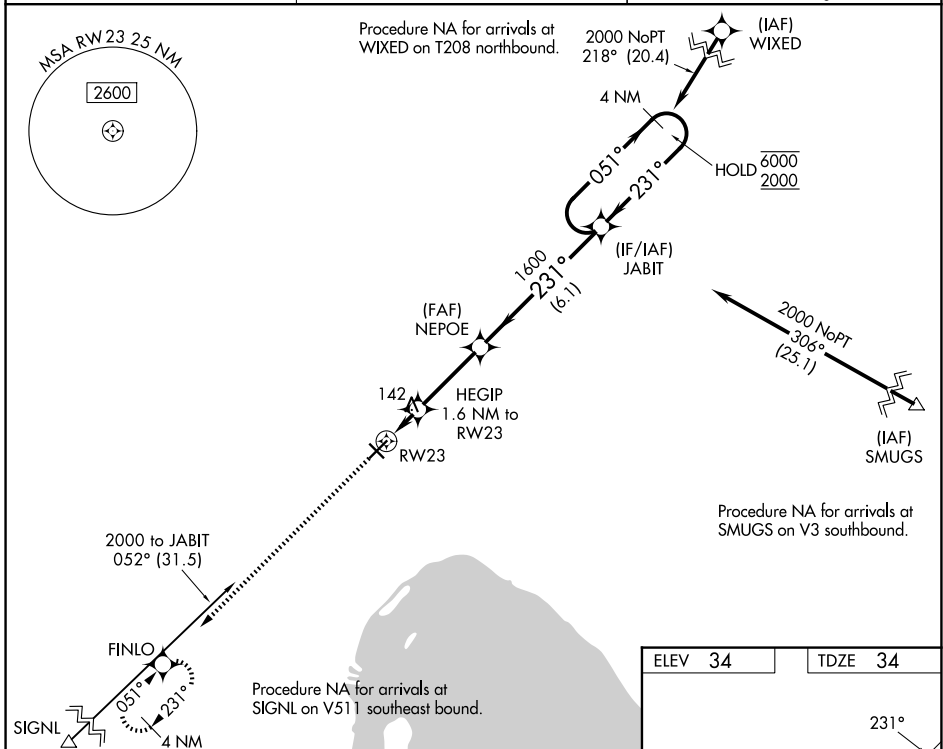


WAAS CH 58117 W23A	APP CRS 231°	Rwy Ldg TDZE 34 Apt Elev 34	5000
--	------------------------	---	-------------

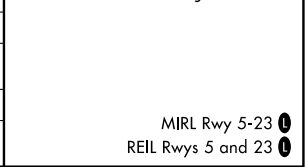
RNAV (GPS) RWY 23

OKEECHOBEE COUNTY (OBE)

RNP APCH - GPS.		MISSED APPROACH: Climb to 2000 direct FINLO and hold.
<p>▲ Procedure NA at night. For uncompensated Baro-VNAV systems, LNAV/VNAV NA below -1.5°C or above 54°C. Baro-VNAV NA when using VRB altimeter setting. Rwy 23 helicopter visibility reduction below 1 SM NA.</p>		
AWOS-3 118.675	MIAMI CENTER 132.25 370.9	UNICOM 123.0 (CTAF) 0



CATEGORY	A	B	C	D
LPV DA		320-1	286 (300-1)	
LNAV/VNAV DA		435-1 1/8	401 (500-1 1/8)	
LNAV MDA		400-1	366 (400-1)	
CIRCLING	500-1 466 (500-1)		660-1 3/4 626 (700-1 3/4)	660-2 626 (700-2)



SE-3, 11 JUN 2026 to 09 JUL 2026

SE-3, 11 JUN 2026 to 09 JUL 2026