

WAAS CH 65633 W29A	APP CRS 285°	Rwy Ldg TDZE 1183 Apt Elev 1183	3302 1183 1183
--	------------------------	---	---

RNAV (GPS) RWY 29

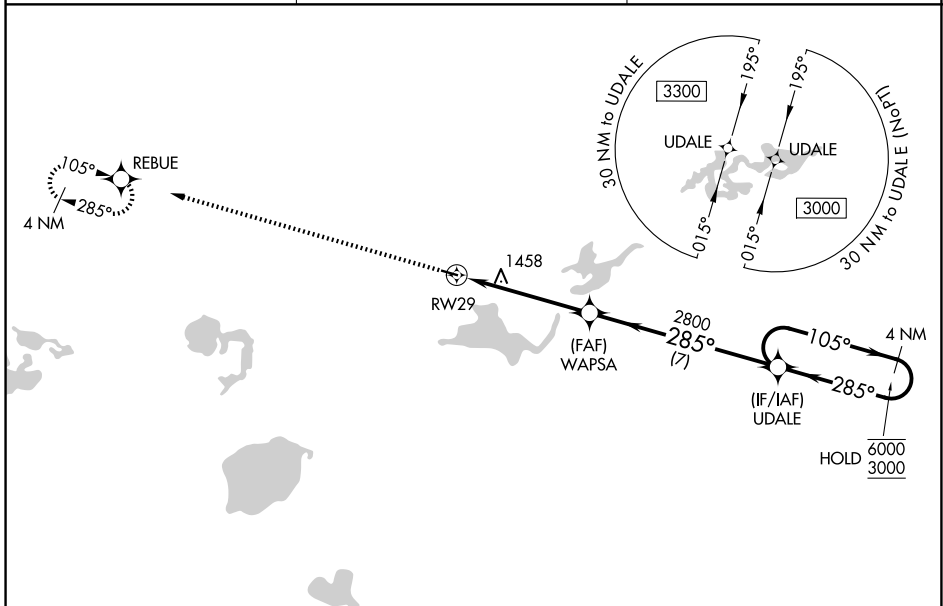
PAYNESVILLE MUNI (PEX)

RNP APCH - GPS.

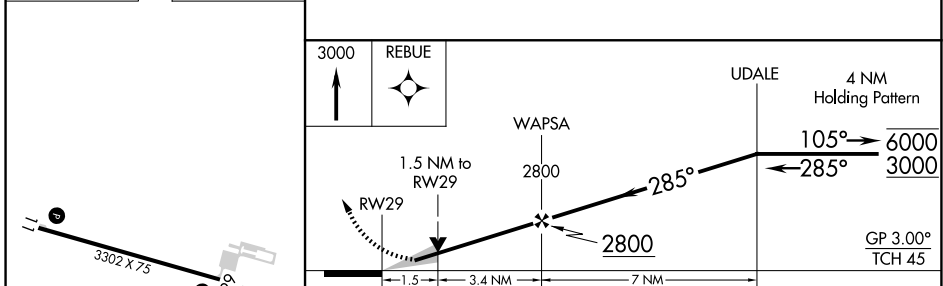
Baro-VNAV and VDP NA when using LJF altimeter setting. For uncompensated Baro-VNAV systems, LNAV/VNAV NA below -17°C or above 54°C. When local altimeter not received, use LJF altimeter setting and increase LPV DA to 1434 feet; increase LNAV/VNAV DA to 1771 feet and all visibilities ¼ SM. Increase all MDAs 60 feet and LNAV and Circling visibility Cat C ¼ SM.

MISSED APPROACH:
Climb to 3000 direct REBUE and hold.

AWOS-3PT 120.35	MINNEAPOLIS CENTER 125.5 323.1	CTAF 122.9
---------------------------	--	----------------------



ELEV 1183	TDZE 1183
-----------	-----------



CATEGORY	A	B	C	D
LPV DA	1383-1		200 (200-1)	NA
LNAV/VNAV DA	1720-1½		537 (600-1½)	NA
LNAV MDA	1720-1	537 (600-1)	1720-1½ 537 (600-1½)	NA
CIRCLING	1720-1 537 (600-1)	1760-1 577 (600-1)	1920-2 737 (800-2)	NA

NC-1, 11 JUN 2026 to 09 JUL 2026

NC-1, 11 JUN 2026 to 09 JUL 2026