

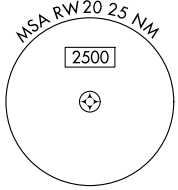
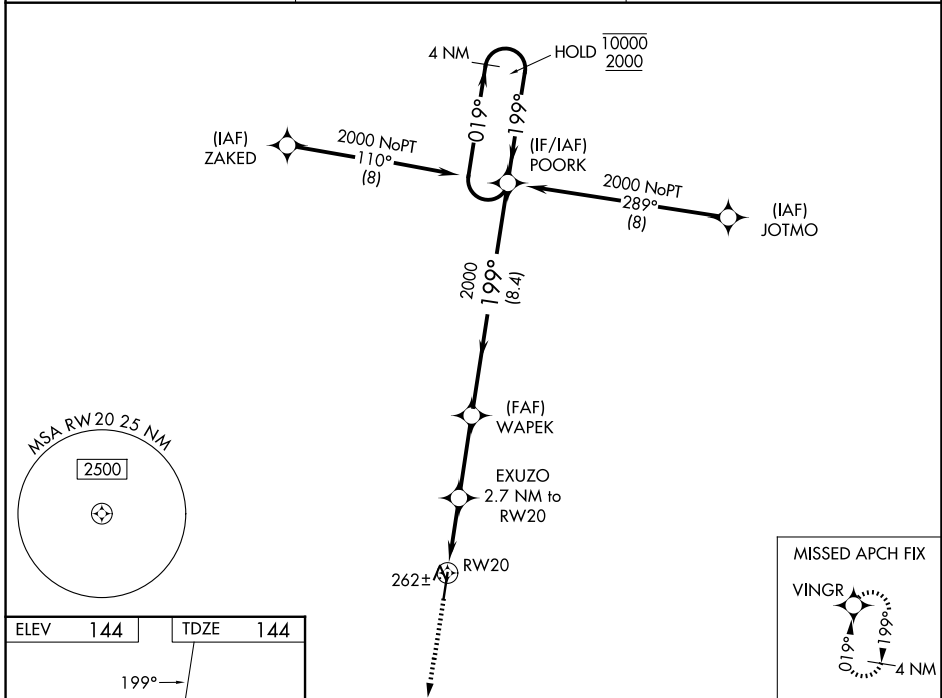
WAAS CH 72725 W20A	APP CRS 199°	Rwy Ldg TDZE 144 Apt Elev 144
--	------------------------	---

RNAV (GPS) RWY 20

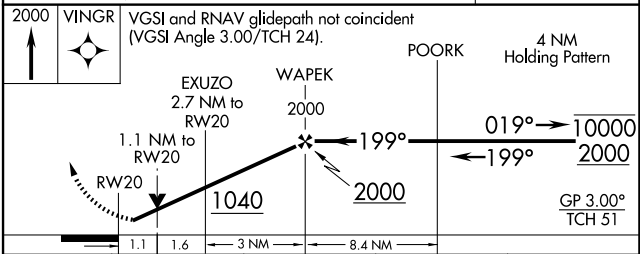
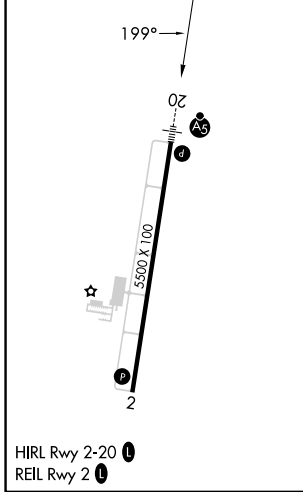
HALIFAX/NORTHAMPTON RGNL (IXA)

RNP APCH-GPS. ⚠ Circling NA east of Rwy 2-20. Rwy 20 helicopter visibility reduction below 3/4 SM NA. ⚠ Inop table does not apply to LPV. For uncompensated Baro-VNAV systems, LNAV/VNAV NA below -1.5°C or above 54°C. For inop ALS increase LNAV/VNAV visibility all Cats to 3/8 SM and LNAV visibility all Cats to 1 SM.	MALSR 	MISSED APPROACH: Climb to 2000 direct VINGR and hold.
---	-----------	---

AWOS-3PT 119.975	WASHINGTON CENTER 132.025 290.425	UNICOM 123.075 (CTAF) 0
----------------------------	---	-----------------------------------



ELEV 144	TDZE 144
----------	----------



CATEGORY	A	B	C	D
LPV DA		394-3/4	250 (300-3/4)	
LNAV/VNAV DA		423-3/4	279 (300-3/4)	
LNAV MDA		520-3/4	376 (400-3/4)	
CIRCLING	580-1	600-1	780-1 3/4	860-2 1/4
	436 (500-1)	456 (500-1)	636 (700-1 3/4)	716 (800-2 1/4)

SE-2, 11 JUN 2026 to 09 JUL 2026

SE-2, 11 JUN 2026 to 09 JUL 2026