

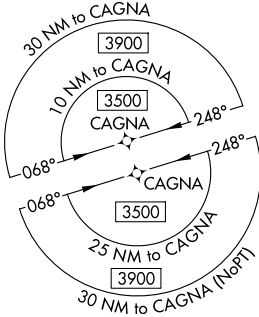
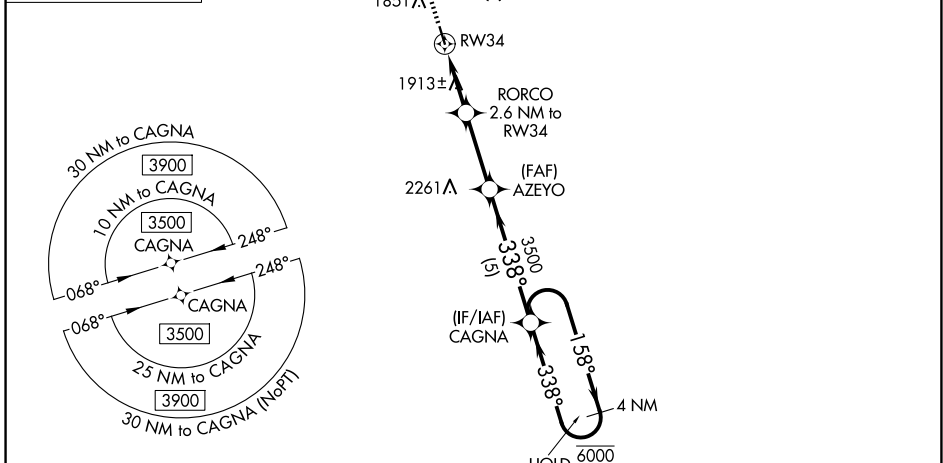
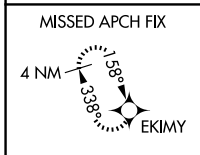
WAAS CH <b>42727</b> <b>W34A</b>	APP CRS <b>338°</b>	Rwy Idg TDZE Apt Elev	<b>3702</b> <b>1737</b> <b>1744</b>
--	------------------------	-----------------------------	---

# RNAV (GPS) RWY 34

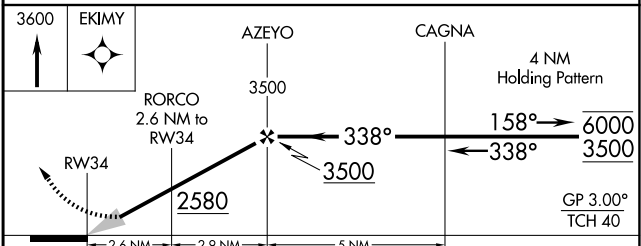
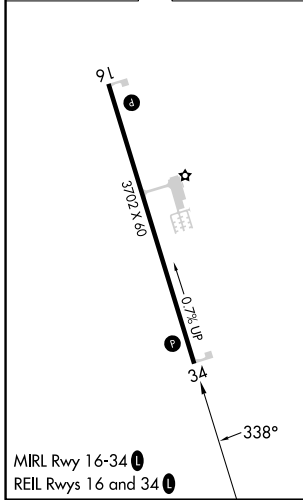
RED CLOUD MUNI (7V7)

RNP APCH - GPS.	MISSED APPROACH: Climb to 3600 direct EKIMY and hold.
Baro-VNAV NA. Use K82 altimeter setting; when not received, use HSI altimeter setting and increase LPV DA to 2092 feet and LNAV/VNAV DA to 2255 feet and all MDAs 60 feet.	

K82 AWOS-3PT <b>118.45</b>	MINNEAPOLIS CENTER <b>119.4 278.8</b>	CTAF <b>122.9</b>
-------------------------------	--	----------------------



ELEV 1744	TDZE 1737
-----------	-----------



CATEGORY	A	B	C	D
LPV DA	2047-1	310 (400-1)		NA
LNAV/VNAV DA	2210-1 <sup>3</sup> / <sub>8</sub>	473 (500-1 <sup>3</sup> / <sub>8</sub> )		NA
LNAV MDA	2260-1	523 (600-1)		NA
CIRCLING	2280-1 536 (600-1)	2300-1 556 (600-1)		NA

NC-2, 11 JUN 2026 to 09 JUL 2026

NC-2, 11 JUN 2026 to 09 JUL 2026