

WAAS CH <b>62928</b> <b>W28A</b>	APP CRS <b>280°</b>	Rwy Ldg TDZE <b>928</b> Apt Elev <b>928</b>	<b>4549</b>
--	------------------------	---	-------------

# RNAV (GPS) RWY 28

BOGGS FLD (USW)

RNP APCH.

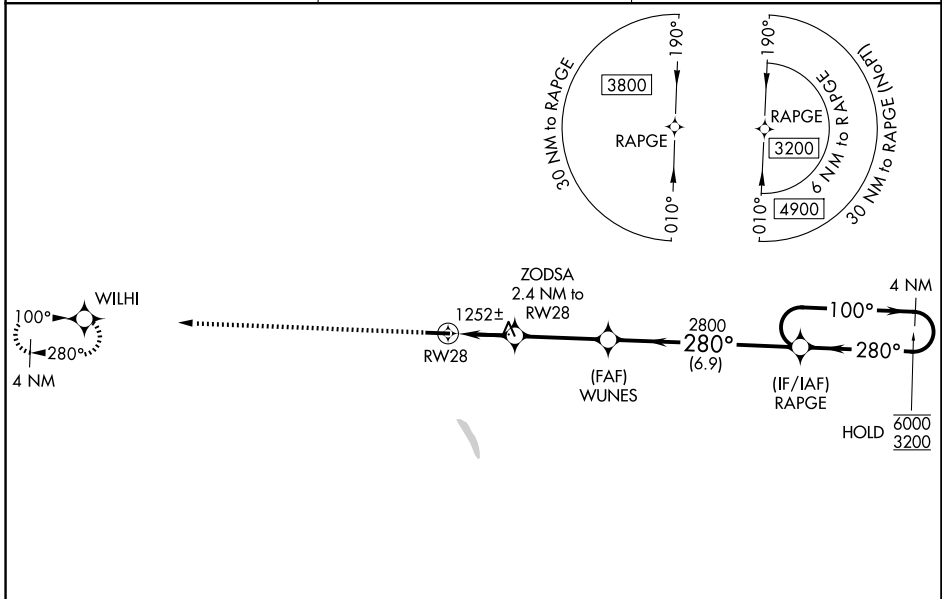
**▼** Rwy 28 helicopter visibility reduction below 1 SM NA. Rwy 28 Straight-in and Circling minimums NA at night. When local altimeter setting not received, use Charleston altimeter setting and increase all MDA's 80 feet, LP and LNAV Cats C and D visibility 1/8 SM and Circling Cats C and D visibility 1/4 SM. \*1780 when using Charleston altimeter setting.

**MISSED APPROACH:**  
Climb to 3500 direct WILHI and hold.

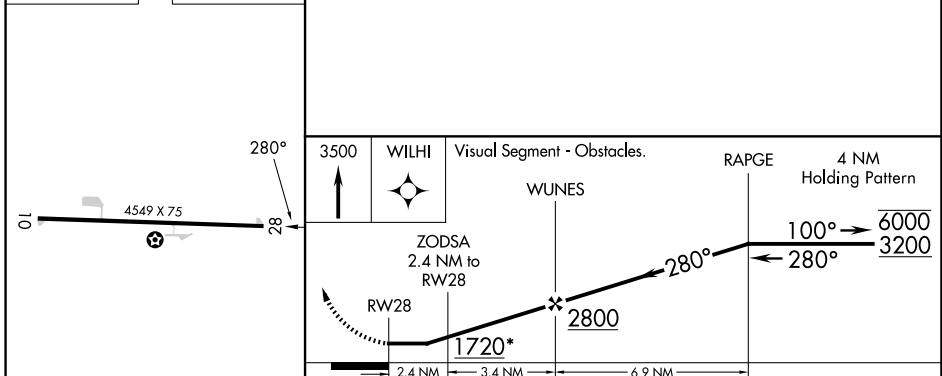
AWOS-3  
**118.575**

CHARLESTON APP CON  
**124.1 269.125**

UNICOM  
**122.725 (CTAF) ①**



ELEV 928	TDZE 928
----------	----------



CATEGORY	A	B	C	D
LP MDA	1520-1	592 (600-1)	1520-1 3/4	592 (600-1 3/4)
LNAV MDA	1520-1	592 (600-1)	1520-1 3/4	592 (600-1 3/4)
CIRCLING	1560-1 632 (700-1)	1760-1 1/4 832 (900-1 1/4)	1760-2 1/2 832 (900-2 1/2)	1760-2 3/4 832 (900-2 3/4)

NE-4, 11 JUN 2026 to 09 JUL 2026

NE-4, 11 JUN 2026 to 09 JUL 2026