

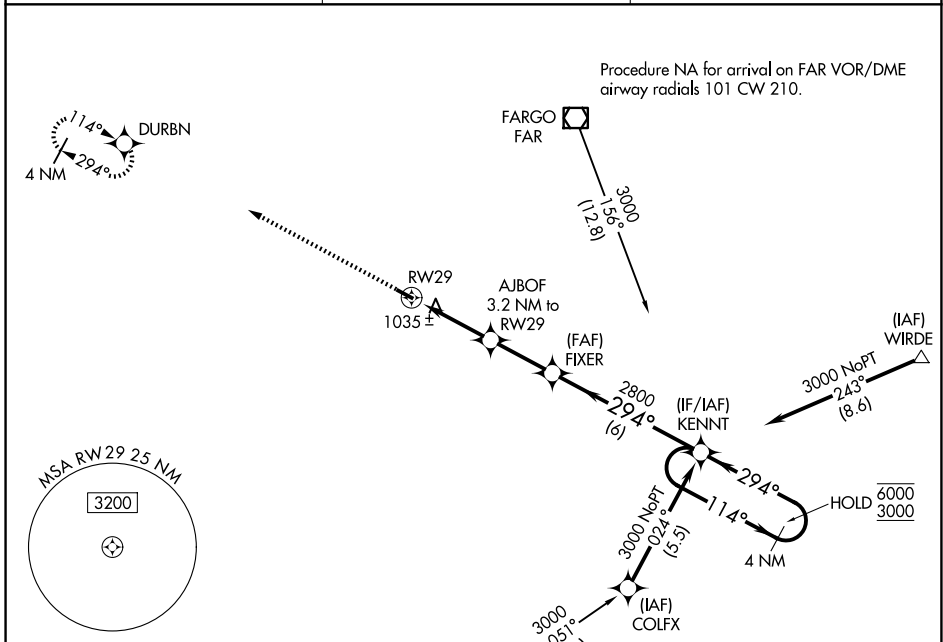
APP CRS	Rwy Ldg	3300
294°	TDZE	947
	Apt Elev	947

RNAV (GPS) RWY 29

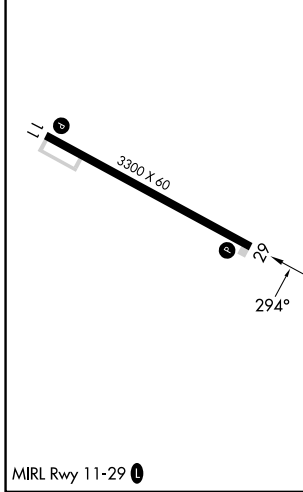
ROBERT ODEGAARD FLD (K74)

RNP APCH-GPS.	MISSED APPROACH: Climb to 3000 direct DURBN and hold.
<p>V Use Fargo altimeter setting, when not received, use Moorhead altimeter setting.</p> <p>A NA</p>	

FAR ASOS 124.5 379.2	FARGO APP CON 120.4 377.15	CTAF 122.9 0
--------------------------------	--------------------------------------	-------------------------------



ELEV 947	TDZE 947
----------	----------



3000	DURBN	VGSi and descent angles not coincident (VGSi Angle 3.00/TCH 25).		KENNT	4 NM Holding Pattern
		AJBOF 3.2 NM to RW29	FIXER		
		≤ 3.00° TCH 40	2800	114° → 6000	← 294° 3000
		3.2 NM	2.5 NM	6 NM	
CATEGORY	A	B	C	D	
LNAV MDA	1400-1	453 (500-1)		NA	
CIRCLING	1680-1	733 (800-1)		NA	

NC-1, 11 JUN 2026 to 09 JUL 2026

NC-1, 11 JUN 2026 to 09 JUL 2026