

LOC/DME I-PUK 111.15 Chan 48 (Y)	APP CRS 162°	Rwy Ldg TDZE Apt Elev	10000 69 69
---	------------------------	-----------------------------	--

ILS RWY 16 (SA CAT I & II)

NORTHWEST FLORIDA BEACHES INTL (ECP)

DME required for procedure entry. DME required.

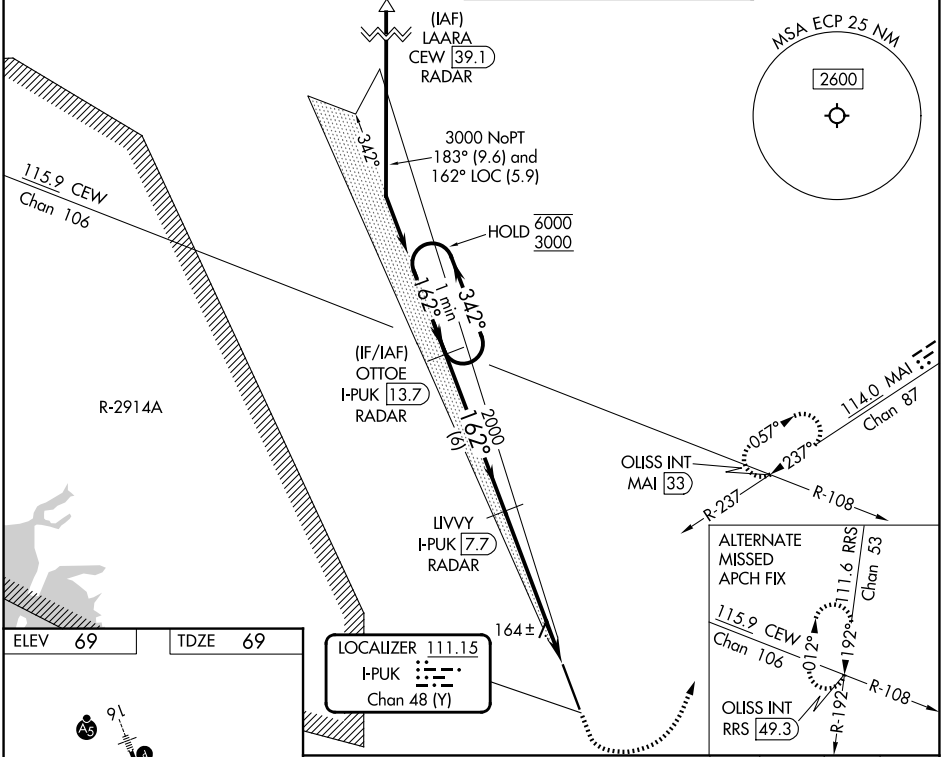
SA CAT I: Requires specific OPSPEC, MSPEC, or LOA approval and use of HUD to DH.

SA CAT II: Reduced lighting: requires specific OPSPEC, MSPEC, or LOA approval and use of autoland or HUD to touchdown.

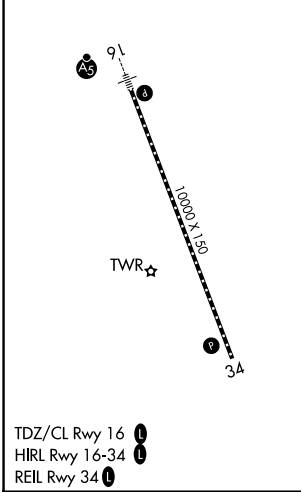
MALS

MISSED APPROACH: Climb to 600 then climbing left turn to 4000 on heading 025° and on MAI VORTAC R-237 to OUISS INT/MAI 33 DME and hold, continue climb-in-hold to 4000.

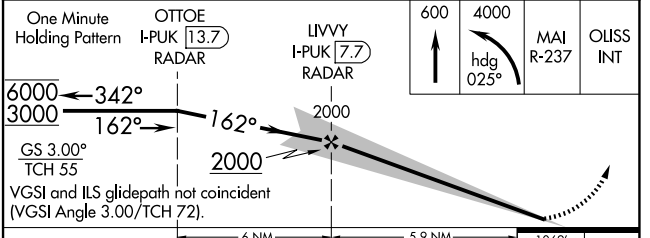
ATIS 119.975	TYNDALL APP CON* 125.2	PANAMA CITY TOWER* 118.95 (CTAF) 0	GND CON 121.65
------------------------	----------------------------------	--	--------------------------



ELEV 69	TDZE 69
---------	---------



TDZ/CL Rwy 16 0
HIRL Rwy 16-34 0
REIL Rwy 34 0



CATEGORY	A	B	C	D
S-ILS 16	SA CAT I RA 151/14 150 DA 219			
S-ILS 16	SA CAT II RA 101/12 100 DA 169			

SA CATEGORY I & II ILS - SPECIAL AIRCREW & AIRCRAFT CERTIFICATION REQUIRED

SE-3, 11 JUN 2026 to 09 JUL 2026

SE-3, 11 JUN 2026 to 09 JUL 2026