

WAAS CH <b>63017</b> <b>W16A</b>	APP CRS <b>162°</b>	Rwy Ldg <b>10000</b> TDZE <b>69</b> Apt Elev <b>69</b>
----------------------------------------	------------------------	--------------------------------------------------------------

# RNAV (GPS) RWY 16

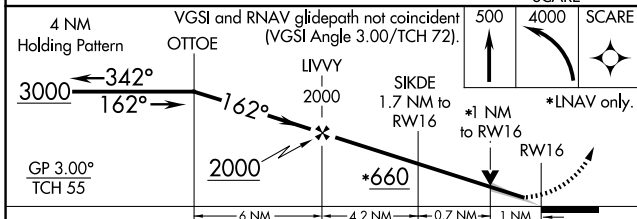
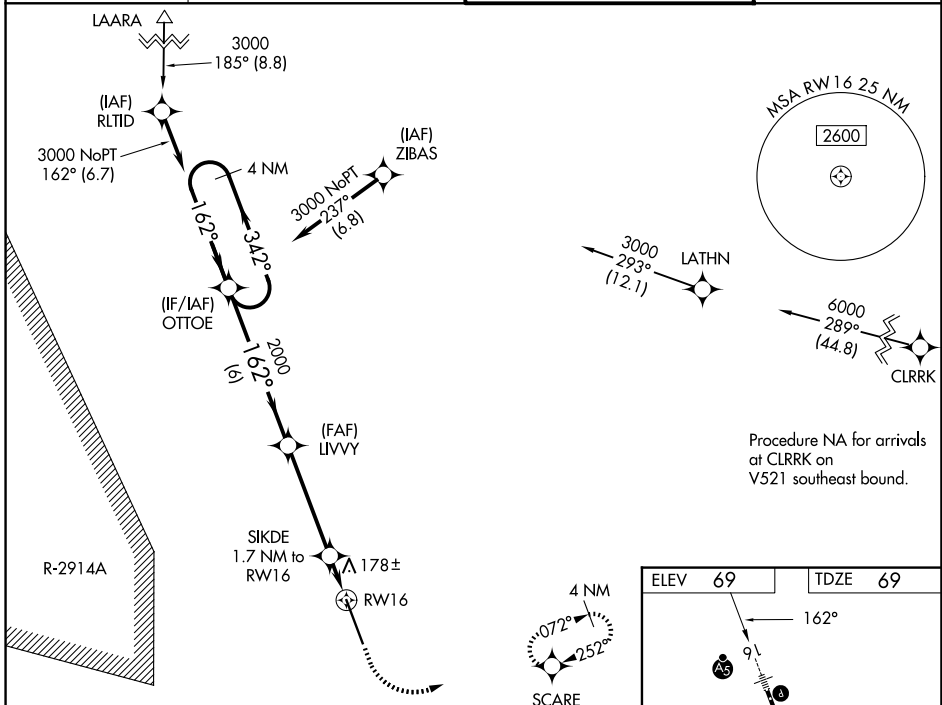
NORTHWEST FLORIDA BEACHES INTL (ECP)

**⚠** For uncompensated Baro-VNAV systems, LNAV/VNAV NA below -15°C (5°F) or above 54°C (130°F). DME/DME RNP-0.3 NA. When local altimeter setting not received, use Destin altimeter setting and increase all DA 88 feet, increase all MDA 100 feet, and increase LNAV/VNAV all Cats visibility and LNAV Cat C and D visibility 3/8 mile. Baro-VNAV and VDP NA when using Destin altimeter setting. For inop MALSR, increase LNAV Cat C and D visibility to 1 mile. For inop MALSR when using Destin altimeter setting, increase all LPV visibility to 7/8 mile, increase all LNAV/VNAV visibility to 1 3/8 mile, and increase LNAV Cat C and D visibility to 1 3/8 mile.

**MALSR**

**MISSED APPROACH:** Climb to 500 then climbing left turn to 4000 direct SCARE and hold, continue climb-in-hold to 4000.

ATIS <b>119.975</b>	TYNDALL APP CON★ <b>125.2</b>	PANAMA CITY TOWER★ <b>118.95 (CTAF) 0</b>	GND CON <b>121.65</b>
------------------------	----------------------------------	----------------------------------------------	--------------------------



ELEV 69	TDZE 69
TDZ/CL Rwy 16 <b>1</b> HIRL Rwy 16-34 <b>1</b> REIL Rwy 34 <b>1</b>	

SE-3, 11 JUN 2026 to 09 JUL 2026

SE-3, 11 JUN 2026 to 09 JUL 2026