

WAAS CH <b>40232</b> <b>W36A</b>	APP CRS <b>356°</b>	Rwy Ldg TDZE Apt Elev	<b>5000</b> <b>1999</b> <b>1999</b>
--	------------------------	-----------------------------	---

# RNAV (GPS) RWY 36

ROOKS COUNTY RGNL (RCP)

RNP APCH - GPS.

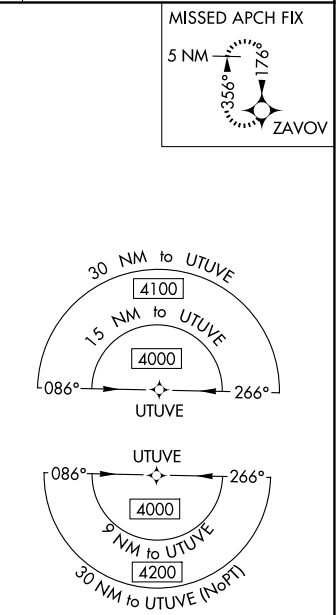
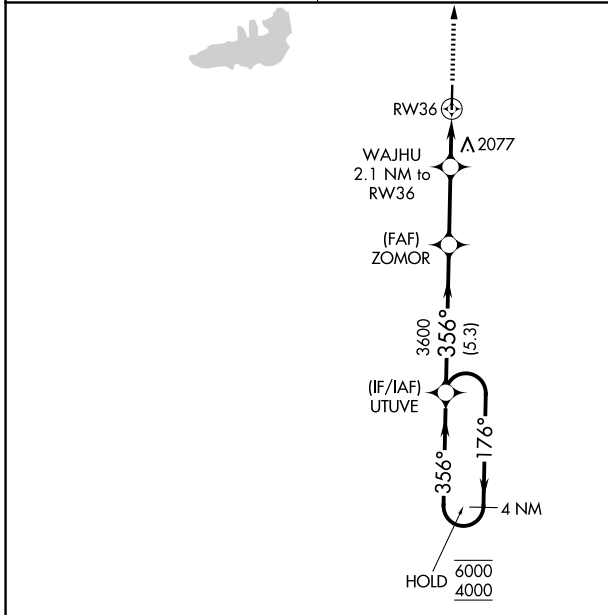
**⚠** Circling NA west of Rwy 18-36. For uncompensated Baro-VNAV systems, LNAV/VNAV NA below -18°C or above 54°C.

MISSED APPROACH: Climb to 6000 direct ZAVOV and hold, continue climb-in-hold to 6000.

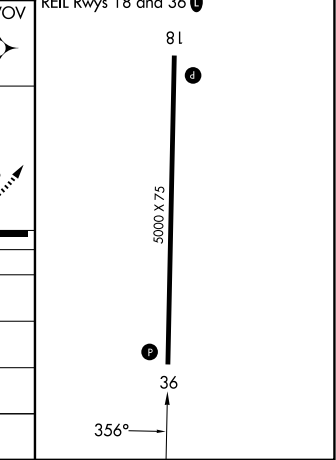
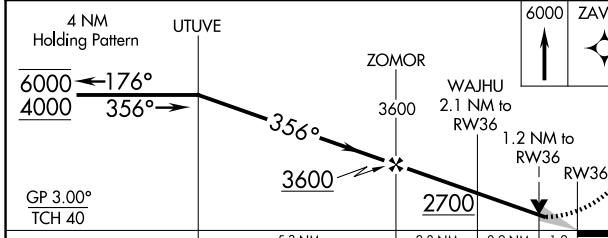
AWOS-3PT  
**120.075**

DENVER CENTER  
**132.7 226.675**

CTAF  
**122.9**



ELEV 1999 **D** TDZE 1999  
MIRL Rwy 18-36 **L**  
REIL Rwys 18 and 36 **L**



CATEGORY	A	B	C	D
LPV DA	2290-1 291 (300-1)			NA
LNAV/ VNAV DA	2340-1 341 (400-1)			NA
LNAV MDA	2420-1 421 (500-1)		2420-1¼ 421 (500-1¼)	NA
CIRCLING	2460-1 461 (500-1)	2480-1 481 (500-1)	2500-1½ 501 (600-1½)	NA

NC-2, 11 JUN 2026 to 09 JUL 2026

NC-2, 11 JUN 2026 to 09 JUL 2026