

WAAS CH 86947 W30A	APP CRS 296°	Rwy Ldg 4200 TDZE 4321 Apt Elev 4328
--	------------------------	---

RNAV (GPS) RWY 30

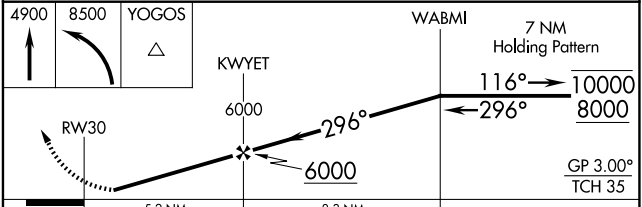
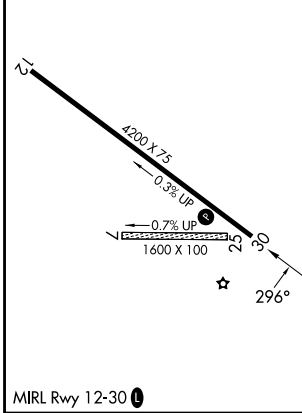
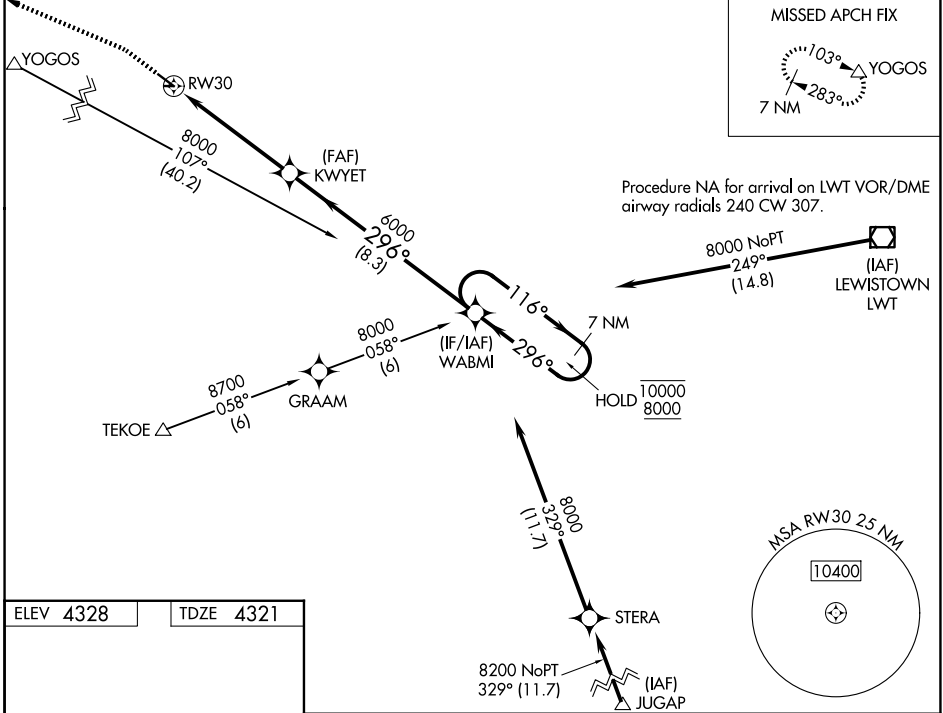
STANFORD/BIGGERSTAFF FLD (S64)

RNP APCH - GPS.

NA Baro-VNAV NA. Rwy 30 helicopter visibility reduction below 1 SM NA. Circling NA to Rwys 7 and 25. Use LWT altimeter setting; when not received, use 19MT altimeter setting and increase LPV DA to 4718 feet and all visibilities 1/8 SM. Increase LNAV/VNAV DA to 4794 feet and all visibilities 1/8 SM. Increase all MDAs 60 feet and LNAV visibility Cat B 1/2 SM, and Circling visibility Cat B 1/2 SM. Procedure NA at night.

MISSED APPROACH: Climb to 4900 then climbing left turn to 8500 direct YOGOS and hold.

LWT ASOS 118.375	SALT LAKE CENTER 133.4 285.4	UNICOM 122.8 (CTAF)
----------------------------	--	-------------------------------



CATEGORY	A	B	C	D
LPV DA	4667-1 346 (400-1)			
LNAV/VNAV DA	4743-1 1/4 422 (500-1 1/4)			
LNAV MDA	5020-1	699 (700-1)	5020-2	699 (700-2)
CIRCLING	5020-1 692 (700-1)	5240-1 1/4 912 (1000-1 1/4)	5600-3 1272 (1300-3)	5880-3 1552 (1600-3)

NW-1, 11 JUN 2026 to 09 JUL 2026

NW-1, 11 JUN 2026 to 09 JUL 2026