

WAAS CH 65736 W35A	APP CRS 355°	Rwy Ldg 3771 TDZE 1733 Apt Elev 1733
--	------------------------	---

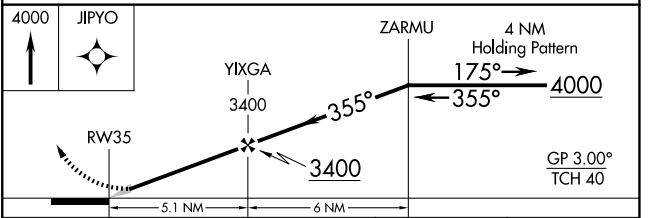
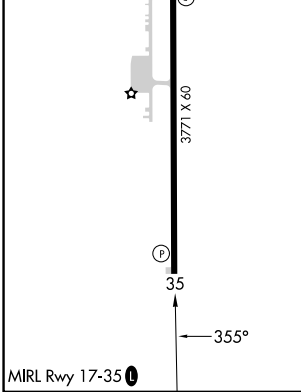
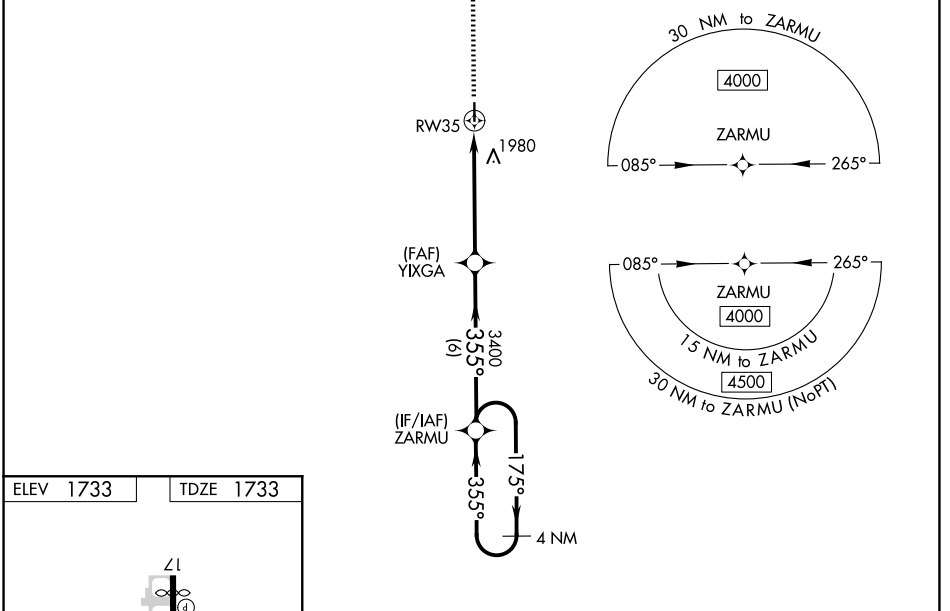
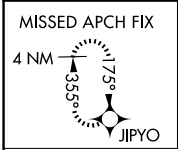
RNAV (GPS) RWY 35

THOMAS MUNI (104)

Baro-VNAV NA. Use Weatherford altimeter setting; when not received, use Clinton Rgnl altimeter setting. DME/DME RNP-0.3 NA. **Not** landing: Rwy 17 operational VGSI required, remain on or above VGSI glidepath until threshold. Helicopter visibility reduction below 1 SM NA.

MISSED APPROACH: Climb to 4000 direct JIPYO and hold.

OJA AWOS-3 118.575	FORT WORTH CENTER 128.4 269.37	CTAF 122.9
------------------------------	--	----------------------



CATEGORY	A	B	C	D
LPV DA	2035-1	302 (400-1)		NA
LNAV/VNAV DA	2035-1	302 (400-1)		NA
LNAV MDA	2220-1	487 (500-1)		NA
CIRCLING	2280-1 547 (600-1)	2460-1 727 (800-1)		NA

SC-1, 11 JUN 2026 to 09 JUL 2026

SC-1, 11 JUN 2026 to 09 JUL 2026