

| | | |
|--|------------------------|---|
| WAAS CH 82220 W16A | APP CRS 158° | Rwy Idg 3700 TDZE 1717 Apt Elev 1717 |
|--|------------------------|---|

RNAV (GPS) RWY 16

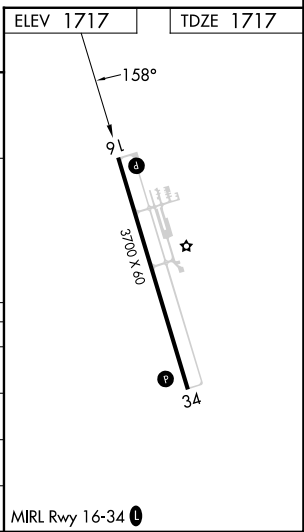
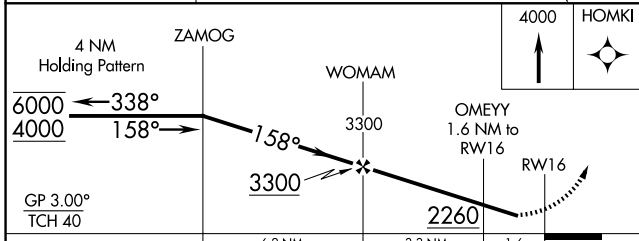
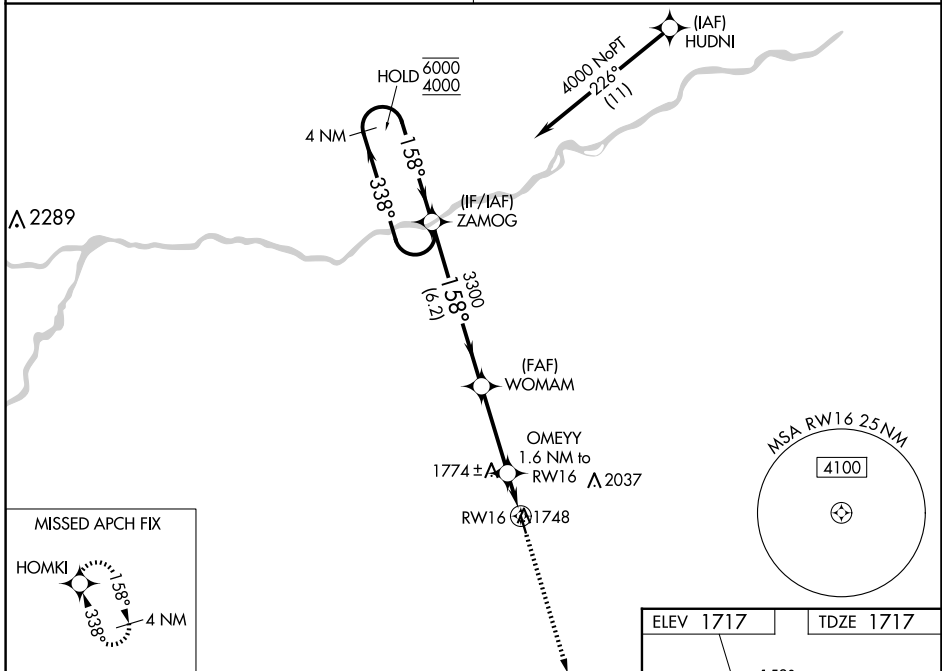
CENTRAL CITY MUNI/LARRY REINEKE FLD (Ø7K)

RNP APCH - GPS.

▼ Rwy 16 helicopter visibility reduction below ¾ SM NA. Use Aurora altimeter setting; when not received, use Grand Island altimeter setting and increase LPV DA to 2020 feet. Increase LNAV/VNAV DA to 2020 feet. Increase all MDAs 20 feet. Baro-VNAV NA.

▲ NA MISSED APPROACH: Climb to 4000 direct HOMKI and hold.

| | |
|---|----------------------|
| MINNEAPOLIS CENTER 126.05 278.8 | CTAF 122.9 |
|---|----------------------|



| CATEGORY | A | B | C | D |
|--------------|-----------------------|-----------------------|---|----|
| LPV DA | 2010-1 | 293 (300-1) | | NA |
| LNAV/VNAV DA | 2010-1 | 293 (300-1) | | NA |
| LNAV MDA | 2080-1 | 363 (400-1) | | NA |
| CIRCLING | 2140-1 423 (500-1) | 2180-1 463 (500-1) | | NA |

MRL Rwy 16-34

NC-2, 11 JUN 2026 to 09 JUL 2026

NC-2, 11 JUN 2026 to 09 JUL 2026