

STEELE, MISSOURI

AL-10597 (FAA)

25331

WAAS CH 82137 W36A	APP CRS 001°	Rwy Ldg TDZE 259 Apt Elev 259	3984
--	------------------------	---	-------------

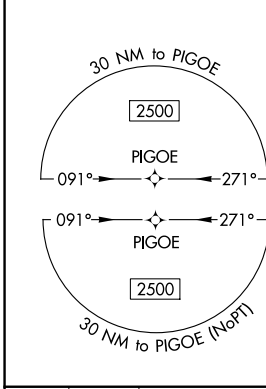
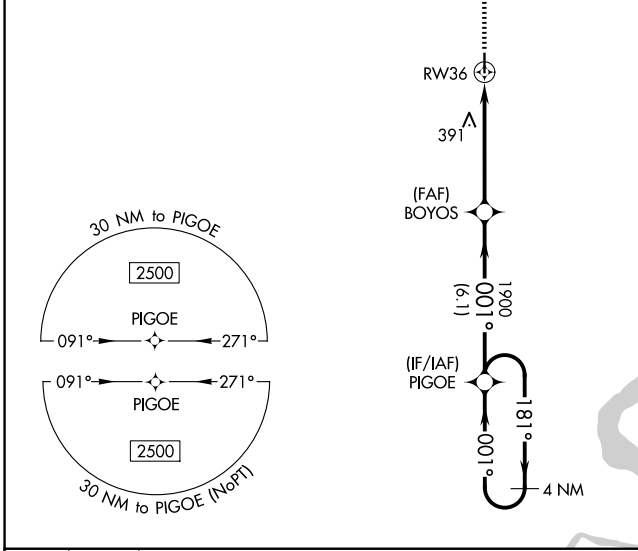
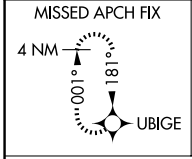
RNAV (GPS) RWY 36

STEELE MUNI (M12)

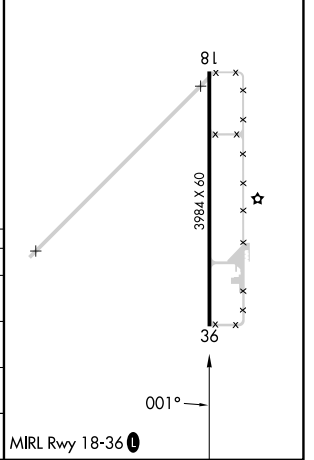
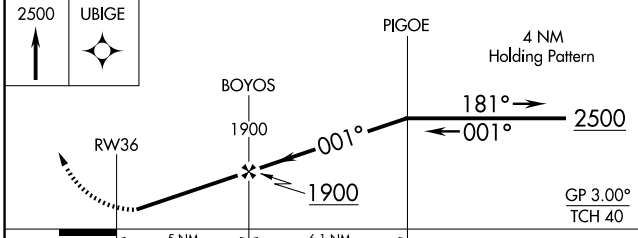
▽ Baro-VNAV NA. Use Blytheville Muni altimeter setting; when not received, use Arkansas Intl altimeter setting. DME/DME RNP-0.3 NA. Helicopter visibility reduction below 3/4 SM NA.

△ NA MISSED APPROACH: Climb to 2500 direct UBIGE and hold.

HKA ASOS 135.025	MEMPHIS CENTER 134.65 316.15	UNICOM 122.8 (CTAF) 0
----------------------------	--	---------------------------------



ELEV 259	TDZE 259
----------	----------



CATEGORY	A	B	C	D
LPV DA	532-1 273 (300-1)			NA
LNAV/VNAV DA	532-1 273 (300-1)			NA
LNAV MDA	680-1	421 (500-1)	680-1 1/4 421 (500-1 1/4)	NA
CIRCLING	700-1 441 (500-1)	900-1 641 (700-1)	900-2 641 (700-2)	NA

STEELE, MISSOURI
Orig 30APR15

36°06'N-89°52'W

RNAV (GPS) RWY 36

STEELE MUNI (M12)

NC-3, 11 JUN 2026 to 09 JUL 2026

NC-3, 11 JUN 2026 to 09 JUL 2026