

WAAS CH <b>72815</b> <b>W19A</b>	APP CRS <b>193°</b>	Rwy Ldg TDZE Apt Elev	<b>8000</b> <b>74</b> <b>75</b>
--	------------------------	-----------------------------	---------------------------------------

# RNAV (GPS) RWY 19L

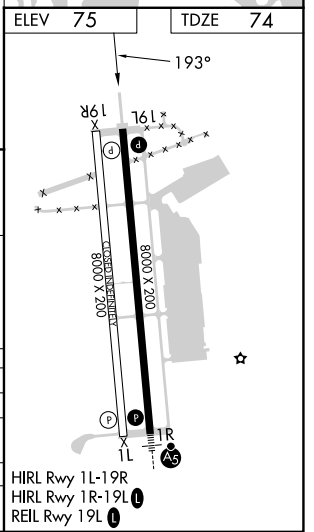
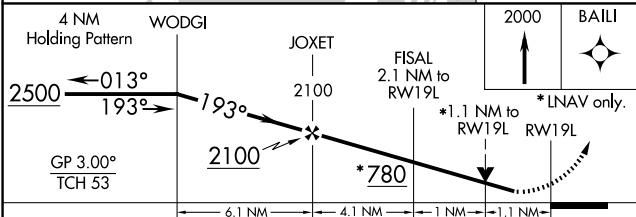
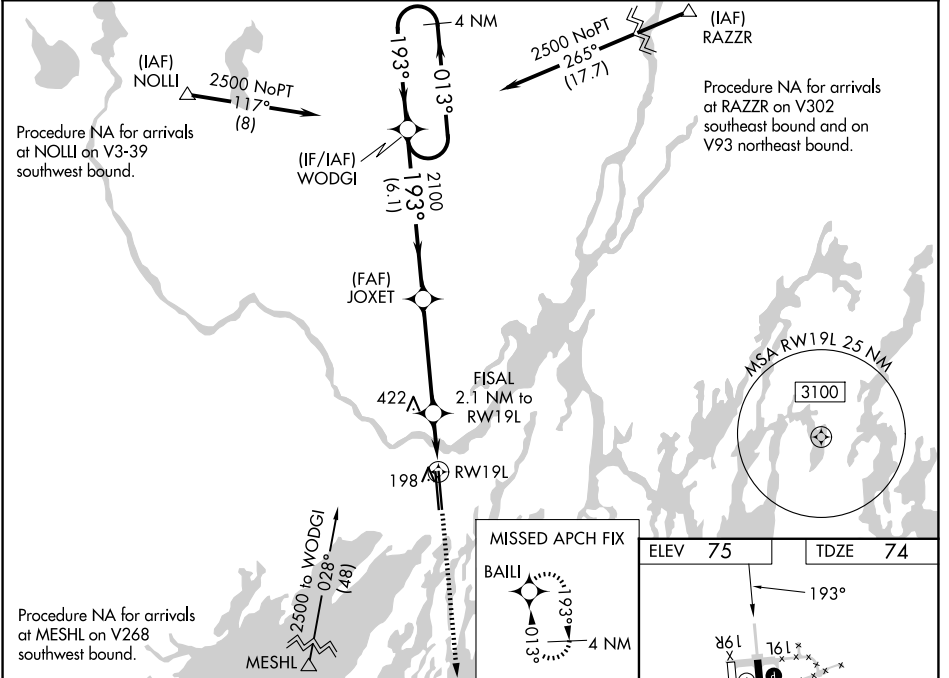
BRUNSWICK EXEC (BXM)

RNP APCH - GPS.

**⚠ NA** For uncompensated Baro-VNAV systems, LNAV/VNAV NA below -1.5°C or above 43°C. Inop table does not apply to LPV all Cats. Rwy 19L helicopter visibility reduction below 3/4 SM NA. Baro-VNAV and VDP NA with Portland altimeter setting. When local altimeter setting not received, use Portland altimeter setting: increase LPV DA to 382 feet and all visibilities 1/4 SM; increase LNAV/VNAV DA to 410 feet and all visibilities 1/4 SM; increase all MDA 60 feet and LNAV and Circling Cats C/D 1/4 SM.

**MISSED APPROACH:**  
Climb to 2000 direct BAILI and hold.

AWOS-3PT <b>134.875</b>	PORTLAND APP CON ★ (112°-292°) <b>119.75 269.35</b> (293°-111°) <b>120.4 299.2</b>	CLNC DEL <b>123.65</b>	UNICOM <b>122.725 (CTAF)</b> <b>0</b>
----------------------------	---	---------------------------	--



CATEGORY	A	B	C	D
LPV DA		331-3/4	257 (300-3/4)	
LNAV/VNAV DA		359-7/8	285 (300-7/8)	
LNAV MDA	460-1	386 (400-1)	460-1 1/8	386 (400-1 1/8)
CIRCLING	560-1	485 (500-1)	840-2 1/4	840-2 1/2
			765 (800-2 1/4)	765 (800-2 1/2)

NE-1, 11 JUN 2026 to 09 JUL 2026

NE-1, 11 JUN 2026 to 09 JUL 2026