

APP CRS	Rwy Ldg	N/A
228°	TDZE	N/A
	Apt Elev	454

RNAV (GPS)-B

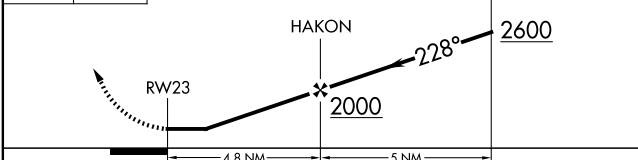
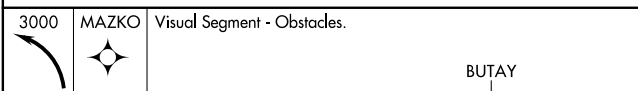
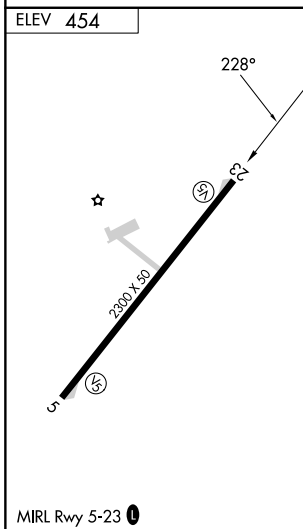
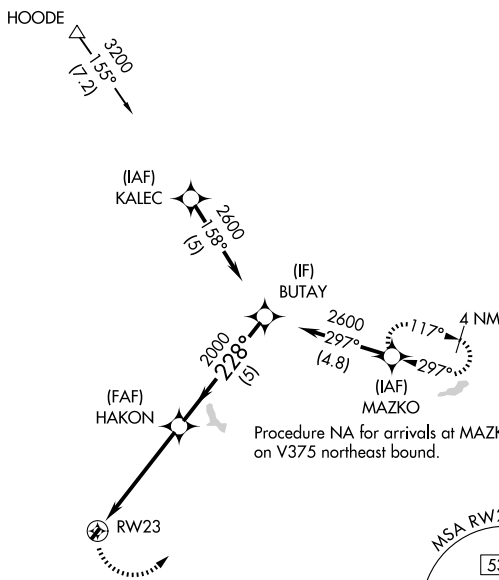
GORDONSVILLE MUNI (GVE)

▼ When local altimeter setting not received, use Orange County altimeter setting and increase all MDA 20 ft. DME/DME RNP-0.3 NA. Procedure NA at night.
▲ NA Helicopter visibility reduction below 1 SM NA.

MISSED APPROACH: Climbing left turn to 3000 direct MAZKO and hold.

AWOS-3 120.225	POTOMAC APP CON 132.85 323.125	UNICOM 123.0 (CTAF) 0
--------------------------	--	---------------------------------

Procedure NA for arrivals at HOODE on V140 northeast bound.



CATEGORY	A	B	C	D
CIRCLING	1520-3	1066 (1100-3)	NA	

NE-3, 11 JUN 2026 to 09 JUL 2026

NE-3, 11 JUN 2026 to 09 JUL 2026